

Rookwood Sectional notes

These notes are intended to assist in locating particular graves at Rookwood. The section names and grave numbers are as allocated by the relevant cemetery authority. The row numbers have been ascribed by SAG for the purpose of making clear where rows start and end, and also to assist in locating graves. However, they are not part of the cemetery record.

The absence of a section from these notes indicates that the numbering system and location of graves within a section is expected to present the researcher no difficulty.

Grave numbers are generally inscribed on the headstone itself, or on the kerb. In some cases they have been obtained from the burial registers maintained by the relevant trustees.

The grave numbering systems used by the various cemetery trusts have varied from time to time, and from trust to trust. In some cases the graves in a row are numbered (e.g.) 1, 3, 5, 7 etc with the numbers 2, 4, 6, 8 etc used in the row behind. We refer to this system as "alternate numbering". In other cases the graves are numbered in strict numerical sequence (e.g.) 1, 2, 3, 4, 5 etc. We refer to this system as "sequential numbering". If in doubt about the system in use, viewing a *Nearby Graves* report will generally reveal the pattern of numbering.

In some sections, or in particular rows, the situation is confused by the use of both systems, apparently as a result of the section being extended in area at some stage. The notes below alert the user to these situations, but it is impossible in these notes to provide detailed guidance. A researcher wishing to locate a particular grave is always recommended to print a *Nearby Graves* report, as these will generally give a better idea of the sequence and names on headstones near the target grave.

However, in some sections, the graves are listed in strict numerical sequence, without attempting to mirror the way in which they appear on the ground. This applies in areas where the graves are not arranged in rows; or are so sparse and scattered that the row pattern is difficult or impossible to detect.

For further information, click on the appropriate link below:

[Anglican](#)

[Assyrian](#)

[Catholic Mortuaries 2 & 3](#)

[Chinese](#)

[Estonian](#)

[Independent](#)

Independent Methodist

[Jewish](#)

[Korean](#)

[Latvian](#)

[Lutheran](#)

[Methodist](#)

[Old Anglican](#)

[Old Catholic Mortuary](#)

[Old Chinese](#)
[Old General](#)
[Old Jewish](#)
[Old Presbyterian](#)
[Old Wesleyan](#)
[Other Ethnic](#)
[Polish](#)
[Russian Orthodox](#)
[Salvation Army](#) - see [Independent](#)
[Serbian Orthodox](#)
[Society of Friends](#)
[Uniting Church](#) – see [Methodist](#)
[Ukrainian Orthodox](#)
[War Memorial Cemetery](#)

[Anglican](#)

A map of this area (and of the Old Anglican area) showing the general layout of the sections is available by clicking [here](#). A copy of the handout provided by the Anglican & General Trust, Rookwood, is [here](#).

About 3,000 transcription numbers in these sections are duplicated within the Lutheran sections. The duplicated numbers are 177926-180781. Searches by transcription number in this range will generally provide two hits, where only one should generally result. Researchers should generally be able to readily identify the desired target transcription.

Granite Lawn 2

The data for this lawn were omitted from the fiche edition. The missing data was retranscribed in December 2002 and added to this CD.

Lawn 2

Graves 633-706 – not sighted

Sections 1-4

These sections do not exist – the first four sections were named A-D

Section 5

Graves 708-715 – not sighted.

Graves 5536, 5534 – in reverse order.

Section 6

Row 1 – at the end of this row the initial transcriptions in 1983 recorded two plots, possibly vaults, numbered 1 and 92 (duplicating numbers earlier in the row). However, when the transcriptions were being checked in 1987 these plots were not sighted.

There is a large square cement vault situated at top of path between Graves 3872-3973 in Row 18. Two inscription plates are missing from either side of padlocked metal doors. There are crosses on both doors. The vault has a flat roof, and stands on a circular sandstone base. Blue & white tiled entrance. No identification or grave numbers sighted.

Grave 121 – not sighted

Graves 3731-3744A – transcribed but the numbers not confirmed at the Anglican Office, Rookwood Cemetery.

Section 7

Vault 1 is between Rows 54 & 55, and an un-numbered vault between lies Rows 56 & 57.

Section 8

The War Memorial Chapel divides Row 19. There is an un-numbered vault in the centre of the roadway in Row 19.

Graves 2228-2237, 2472-2479, 2526-2535, 2688-2699, 2790-2801, 2946-2957, 2997-3008 – not sighted

Section 10

This section is divided by a drain.

Section 12

Grave 946 – does not exist.

Grave 2065 – not sighted.

There is an un-numbered vault located within the circular area between Sections 9 & 12, adjoining Rows 38 & 39.

Section 13

Graves 566-631, 1134-1182, 1281-1331, 1471-1520, 1627-1686, 1830-1888, 1996-2045, 2155-2204, 2312-2372, 2483-2542, 2653-2701, 2801-2859, 2966-3013, 3404-3450, 3258-3318, 3396-3454, 3562-3610, 3672-3718, 3826-3872, 3957-4003, 4111-4157, 4177-4223, 4331-4389, 4396-4454, 4562-4611, 4612-4661, 4769-4819, 4820-4869 – not sighted

Section 13A

Graves 1-713 – see Section Lawn 2.

Graves 714-763, 814-863, 916-965, 1018-1442 – not sighted.

Section 14

Many grave numbers in this section (including all from Grave 2760) have not been confirmed with the Anglican Office at Rookwood Cemetery.

Section 15

Graves 1837-1862 – numbers not confirmed.

Graves 5090-5198, 5387-5490 – not sighted.

Section 16

Graves 3318-3373, 3608-3666, 3903-3960, 4197-4246, 4483-4521 – not sighted.

Section 16A – Merchant Navy Memorial Cemetery

Inscribed on the Memorial Building:

'Erected to the memory of members of the merchant navy who lost their lives through enemy action in World Wars I & II, many of whom were all well known in the Port of Sydney, and for the burial or deposition of ashes of seamen of all nations'.

'They that go down to the sea in ships, these men see the works of the Lord.' (Psalm 107.)

'Erected by the Merchant Navy War Memorial Appeal through the Sydney Mission to Seamen. 'The Flying Angel.' 1948.'

The transcriptions were taken from bronze plaques on graves and from inscriptions on wall niches in the Memorial Building.

Section 19

Graves 131-176, 445-503, 771-828, 1094-1154, 1422-1478, 1741-1799, 2036-2119, 2383-2442 – not sighted.

Graves 2591-2702 are "duplicated" in Row 18, with the letter "Z" appended. Normal numbering continues from Row 19.

Section H

Grave numbers 4890-4915, 5999-6051 have not been confirmed with the Anglican Office at Rookwood Cemetery.

Grave 7072 – not sighted.

Section NN (2N)

This is a paupers area. Headstones are sparse and scattered over a large area. Grave numbers were not sighted on kerbs, row numbers are not available and the number of grassed plots for the section were estimated. For further information contact the Anglican Office, Rookwood Cemetery.

Section NNN (3N)

This is a grassed area with no headstones. The number of grass plots was estimated but row numbers are not available. For further information about this area refer to the Anglican Office, Rookwood Cemetery.

Section NNNN (4N)

This is an area where headstones are sparse and scattered and row numbers are not available. Grave numbers are shown only when recorded on kerbs.

Section M

This is a grassed area with no headstones – row numbers are not available and the number of plots is estimated. For further information refer to the Anglican Office, Rookwood Cemetery.

The inscriptions included under the heading are four from headstones found in the area bordered by Arthur Street and Section M, and four more – with Chinese inscriptions – from headstones found covering the drain between Section M and Section RRRR.

Section MM (2M)

This is a grassed area where headstones are sparse and scattered, and the 'Serpentine' drain cuts through the site. Row numbers are not available and the number of plots is estimated. Grave numbers were not sighted. For further information refer to the Anglican Office, Rookwood Cemetery.

Section MMM (3M)

This is a grassed area with no headstones – row numbers are not available. The number of grass plots for this site was estimated.

For further information refer to the Anglican Office, Rookwood Cemetery.

Section MMMM (4M)

Section MMMM is a grassed area where headstones are sparse and scattered. Grave numbers were not sighted on kerbs.

For further information refer to the Anglican Office, Rookwood Cemetery.

Remembrance Lawn Section

The data for a number of rows in this section were omitted from the fiche edition, and some other data duplicated. The missing data was retranscribed in November 2002 and added to this CD.

Remembrance Lawn – Wall Niches

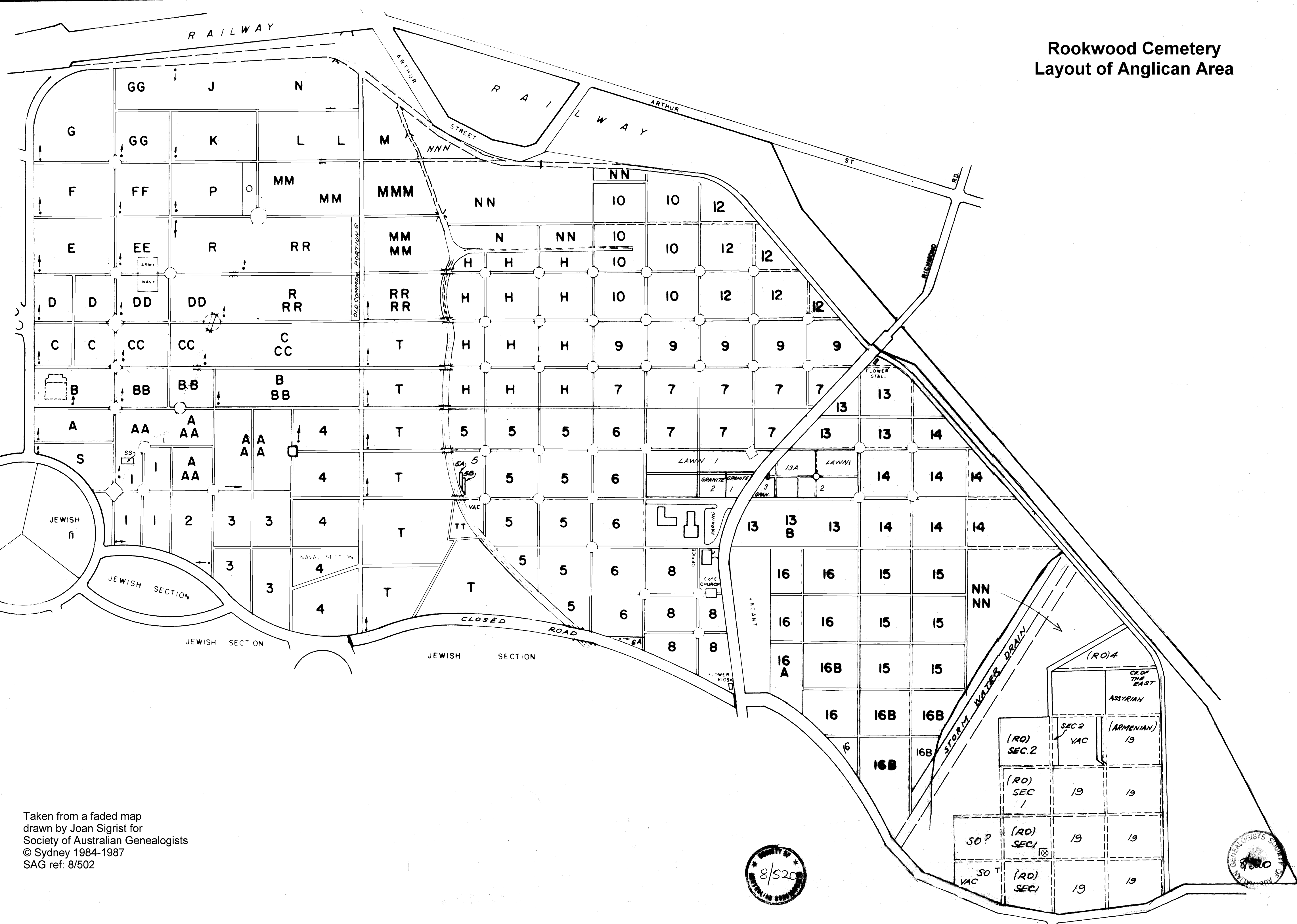
The niches of Rows 4, 5 and 6 were all empty as at July, 1990.

Rose Garden – Wall Niches

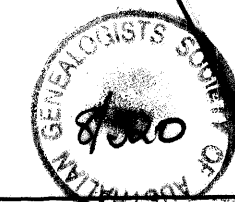
The niches of Blocks 2, 3, 4, 5 and 6 were all empty as at May, 1986.

See also [Old Anglican](#)

Rookwood Cemetery Layout of Anglican Area



Taken from a faded map
drawn by Joan Sigrist for
Society of Australian Genealogists
© Sydney 1984-1987
SAG ref: 8/502



Anglican & General Cemetery Trust, Necropolis

P.O. Box 4,

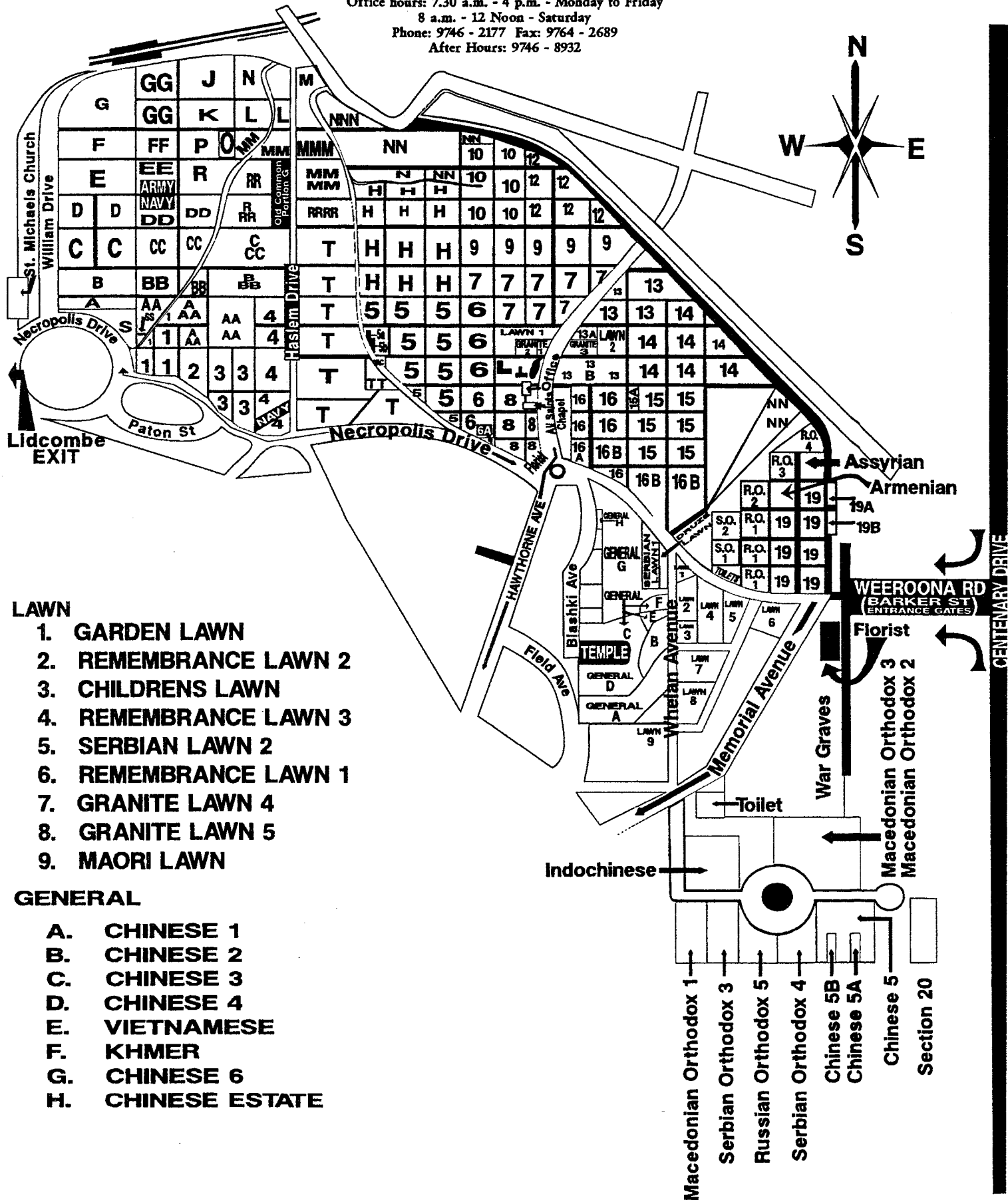
LIDCOMBE N.S.W. 1825

Office hours: 7.30 a.m. - 4 p.m. - Monday to Friday

8 a.m. - 12 Noon - Saturday

Phone: 9746 - 2177 Fax: 9764 - 2689

After Hours: 9746 - 8932



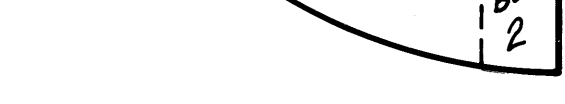
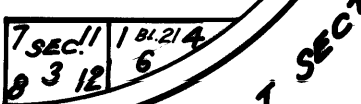
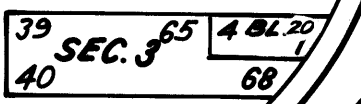
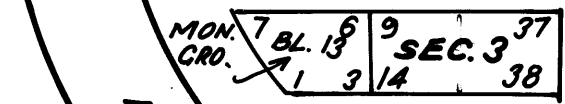
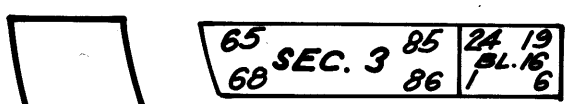
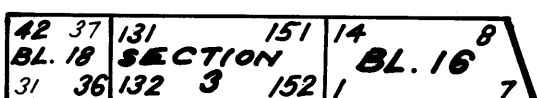
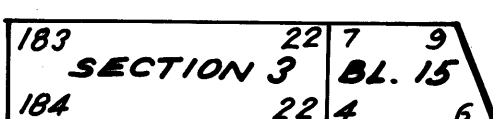
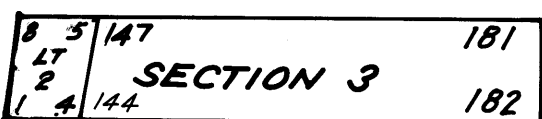
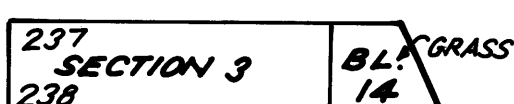
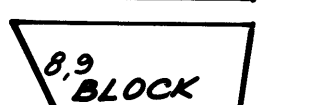
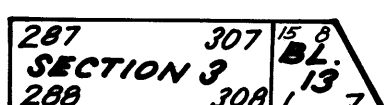
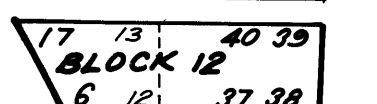
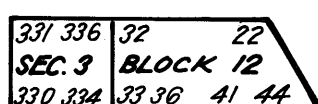
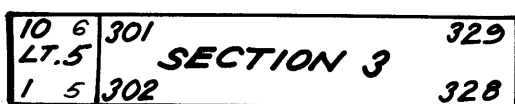
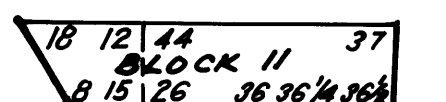
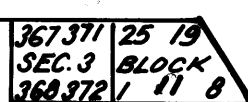
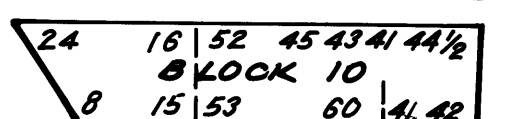
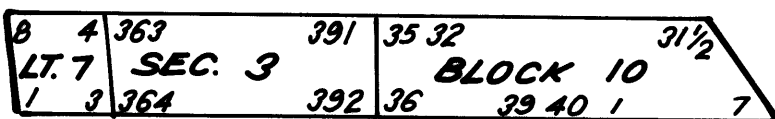
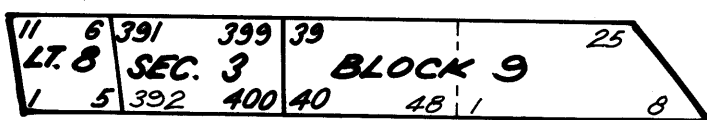
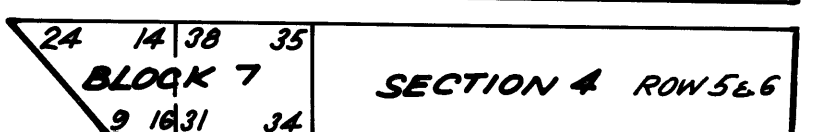
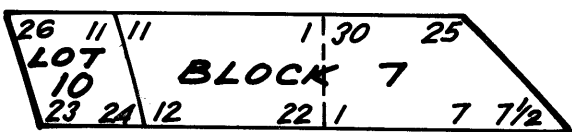
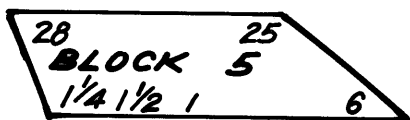
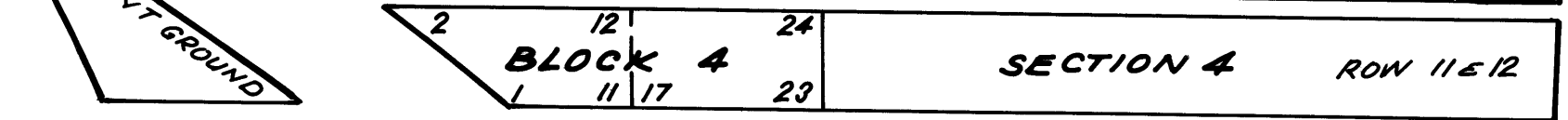
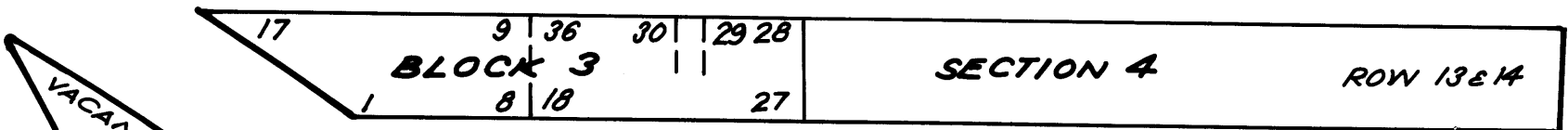
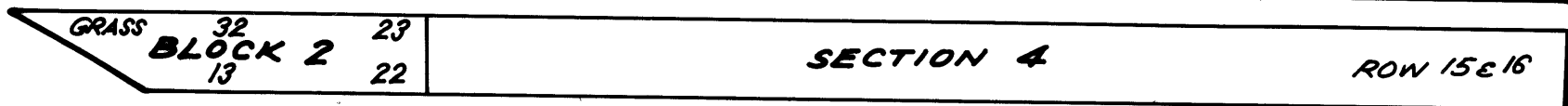
Assyrian

A section of the [Catholic Mortuaries 2 & 3](#) at Rookwood is identified for the burial of people of Shaldean (Assyrian) ethnic origin.

Rookwood Cemetery

Catholic Mortuary 1

Sections 2, 3, 4



NB: There are two similarly numbered sets of "Blocks" on this map - those in the top right area, together with their extensions across the path into the left area; and those in the "Monumental Ground" in the lower left area. Some of the latter are clearly identified as "Monumental Ground" but some are not. A "Nearby Graves" report will help identify the correct block. Note also that there are some minor differences between the grave numbers shown here and those on the final fiche and this CD.

MONUMENTS
BLOCK 15

MONUMENTAL
GROUND SECTION 3

MONUMENT
GROUND SECTION 3

Drawn by Joan Sigrist for
Society of Australian Genealogists
© Sydney 1984-1986
SAG ref: 8/525

8/525

[Catholic Mortuaries 2 & 3](#)

A draft map showing the general section layout is available by clicking [here](#). A copy of the handout provided by the Catholic Office, Rookwood, is [here](#)

Petersham Monuments section

These monuments were originally transcribed in March 1985. Many of the stones had fallen and/or broken and pieces were scattered over the area. Legible fragments were transcribed and are listed at the ends of Rows 1 and 2. Some fragments may have come from other areas.

During the recheck in November, 1987 every attempt was made to lift and transcribe the fallen monuments but some were considered too fragile to move and these were left face down in the same position where they were found. Grave numbers are not available for this section. For further information about this area contact the Catholic Office, Rookwood Cemetery.

Section Monument 1

Graves use alternate numbering system.

Graves 45, 46, 51, 52, 55, 56, 59, 60, 75, 76, 81, 82, 87, 88 – not sighted.

Section 2

Graves 819-844 – not sighted.

Section 12

Graves 3066-3119, 3120-3133, 3299-3357, 3800-3805 – not sighted.

Children's Lawn Section

This is a small lawn area included in Section 12.

Section 13

Grave Nos are shown when found inscribed on plaques.

Section 14

Graves 4417-4642 – not sighted.

Graves 4643-4732 – these are bronze plaques attached to a cement strip in Row 46. They are possibly associated with the St Vincent de Paul Lawn Section, but the grave numbers indicate they are part of this section.

For further information re these graves please contact the Catholic Office, Rookwood Cemetery.

St. Vincent de Paul

There are two lawn areas designated St Vincent de Paul. The first is included within Section 13. The second is on the left side of Barnet Avenue, travelling towards the Necropolis Circuit. Each grave is marked with a bronze plaque, most of them indicating the grave number.

Section 15

Graves 4225-4264 – not sighted

Section 17A

Graves 1727-1798 – see Section 17

Section 17

Graves 315-1600 – when these transcriptions were rechecked in 1988 they appeared to have been cleared for new ethnic graves.

Graves 1611-1726, 1799-1844, 1845-1964 – see Section 17A

Korean Lawn

Rows run at right angles to graves in Section 17

Shaldean (Syrian) Lawn

Row runs at right angles to graves in Section 17

Merchant Seamen

An area within Section 19 dedicated to the Institute for Merchant Seamen.

Vaults

Vault numbers are shown when sighted inscribed on vaults.

Lawn 2

The transcriptions include those on small metal plaques located in the rose gardens surrounding the section.

Graves 70, 71, 144, 145, 210, 211, 268, 269, 328, 329, 366, 367, 395, 396, 418, 419, 853-860, 1819, 1820 – not sighted.

Lawn 3

Graves 1896-1918 – not sighted.

Lawn 7

Rows 1-7 were transcribed in 1985; when they were checked in June 1989 Rows 8-42 were added.

Graves 1066-1565 – not sighted in 1989 – ground being prepared for new graves.

New Polish

This area is situated behind Lawn 5.

Section N

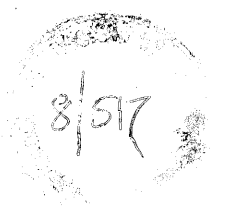
Rows 87-89 – grave numbers not confirmed with the Catholic Office, Rookwood Cemetery.

Section O

At the time transcriptions were being completed, two rows of vaults were under construction between Rows 27 and 28.

Section Q

At the time transcriptions were being completed, vaults were under construction in Row 13.



Drawn by Joan Sigrist for
Society of Australian Genealogists
© Sydney 1983-1984
SAG ref: 8/517

[Chinese](#)

Individual graves of people of Chinese ethnic origin may be found within various denominational areas at Rookwood. However, there are identified sections for such people in the [Old Chinese](#) and [Old General](#) areas within the "Old Ground" of the cemetery, and also in the Independent Methodist area. Further headstones with Chinese inscriptions were found covering the drain between Sections M and RRRR in the Anglican area, and are listed in Section M.

Estonian

A section of the Lutheran area of Rookwood is identified for the burial of people of Estonian ethnic origin.

[Independent](#)

A plan showing the general layout of this area of the cemetery is [here](#).

Section OG (Old Ground)

This section was transcribed in 13 parts, labelled by SAG as A to M.

A map of this section, redrawn from an old map, is available by clicking [here](#)

The section generally uses alternate numbering but intermittently reverts to sequential numbering:

Part A – this part is at the extreme southern point of the section – a circular area – sequential numbering

Part B – alternate numbering.

Graves 4287-4291 – see end of Row 5

Graves 4286-4292 – see end of Row 6

Part C – alternate numbering, but rows divided by a path contain substantial "jumps".

Graves 563Y, 563Z & 563-581 – see Row 1

Graves 564-582 – see Row 2

Part D – generally alternate numbering, but Graves 1151-1155 are sequential.

Graves 1149-1155 – see Row 5

Part E – alternate numbering except for Row 1 and start of Row 20.

Part F – alternate numbering for Rows 1, 2, 7, 9, 10; sequential for Rows 5, 6, 11, 12; mixed for Rows 3, 4, 8. Rows other than 1, 2, 6 each use at least two sequences of numbers and researchers are advised to print and use a Nearby graves report when trying to locate graves.

Part H – sequential numbering for Rows 5, 6, 15, 16; mixed for Rows 1, 2; remainder alternate numbering.

Part I – sequential numbering for Rows 1, 2; mixed for Rows 10-12; remainder alternate numbering.

Part J – mixed numbering for Rows 1, 2, 11, 12; remainder alternate numbering.

Part K – sequential numbering for Rows 1, 2, 15, 16; mixed for Rows 5, 6, 9-11, 17; remainder alternate numbering.

Part M (Old Ground Extension) – sequential numbering for Rows 1, 3; mixed for Row 2; remainder alternate numbering.

Section A

The highest grave numbers in this section are in its central area. These graves are located in Rows 37-40.

A photocopy of a tattered map of this section, detailing the location of each grave is available by clicking [here](#). A redrawn version is [here](#)

Section B

Apart from Row 1 the section uses alternate numbering.

Rows 26-30 form Salvation Army Section 1

Section C

At the start of this section there are several rows added to the area at a later date, with graves numbered 1725-1760. These rows have been named:

Extension 1 – graves 1725-1733 – sequential numbering

Extension 2 – graves 1734-1756 – alternate numbering

Extension 3 – graves 1735-1760 – mixed numbering

The earlier graves then follow – Row 1 uses sequentially numbering; Row 3 mixed numbering; the remainder alternate numbering – the majority using three separate series of numbers!

Grave 1834 – number duplicated in Rows 4 and 6.

Section D

A number of graves were found scattered at the end of this section and are listed after Row 20, with grave numbers noted if they were found inscribed on the kerbs. No row numbers are available for these entries.

Section E

Row 1 – sequential numbering.

Rows 2-23 – alternate numbering.

In the central area of the section there are several small rows, also numbered 1-6, plus one un-numbered, with plots numbered sequentially, 1-54. Graves 31-53 were not sighted.

Section G

Apart from Row 1, this section uses alternate numbering.

Section H

Row 1 uses sequential numbering; Row 37 uses mixed numbering; remaining rows use alternate numbering.

A map of this section, detailing the location of each grave is available by clicking [here](#)

Section J

Includes Salvation Army – Section 2.

The section uses alternate numbering, except for Rows 18, 31, 32, where sequential numbering applies.

A photocopy of a tattered map of this section, detailing the location of each grave is available by clicking [here](#)

A redrawn version of the map is [here](#).

Section K

This section uses alternate numbering, except for Row 69 where the numbering is sequential. Rows 49 onwards are at right angles to the main section.

Grave 2690 – see end of Row 52.

A photocopy of a tattered map of this section, detailing the location of each grave is available by clicking [here](#)

Section N

Includes [Salvation Army](#) – Section 3

Section O

This section was transcribed as far as Row 22, from where it continues into the [Russian Orthodox](#) area. Most headstones in that area are in Cyrillic script. They have been transcribed but are not on either the fiche or this CD. See Transcription coverage for further information.

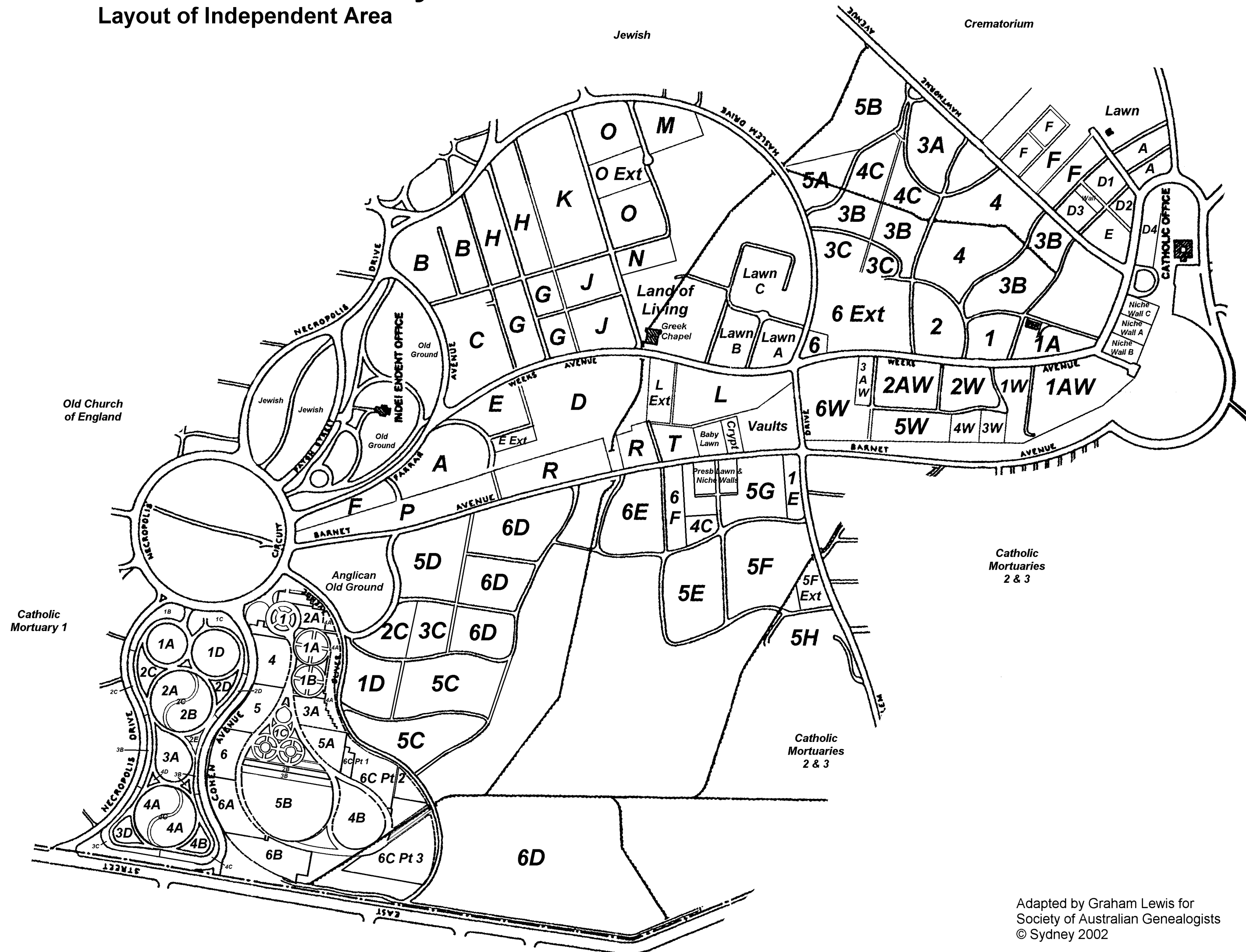
Graves 974-1080 – not sighted.

Lawn Section B

Row 9 – graves 482-536 – vacant at the time of transcription.

Rookwood Cemetery

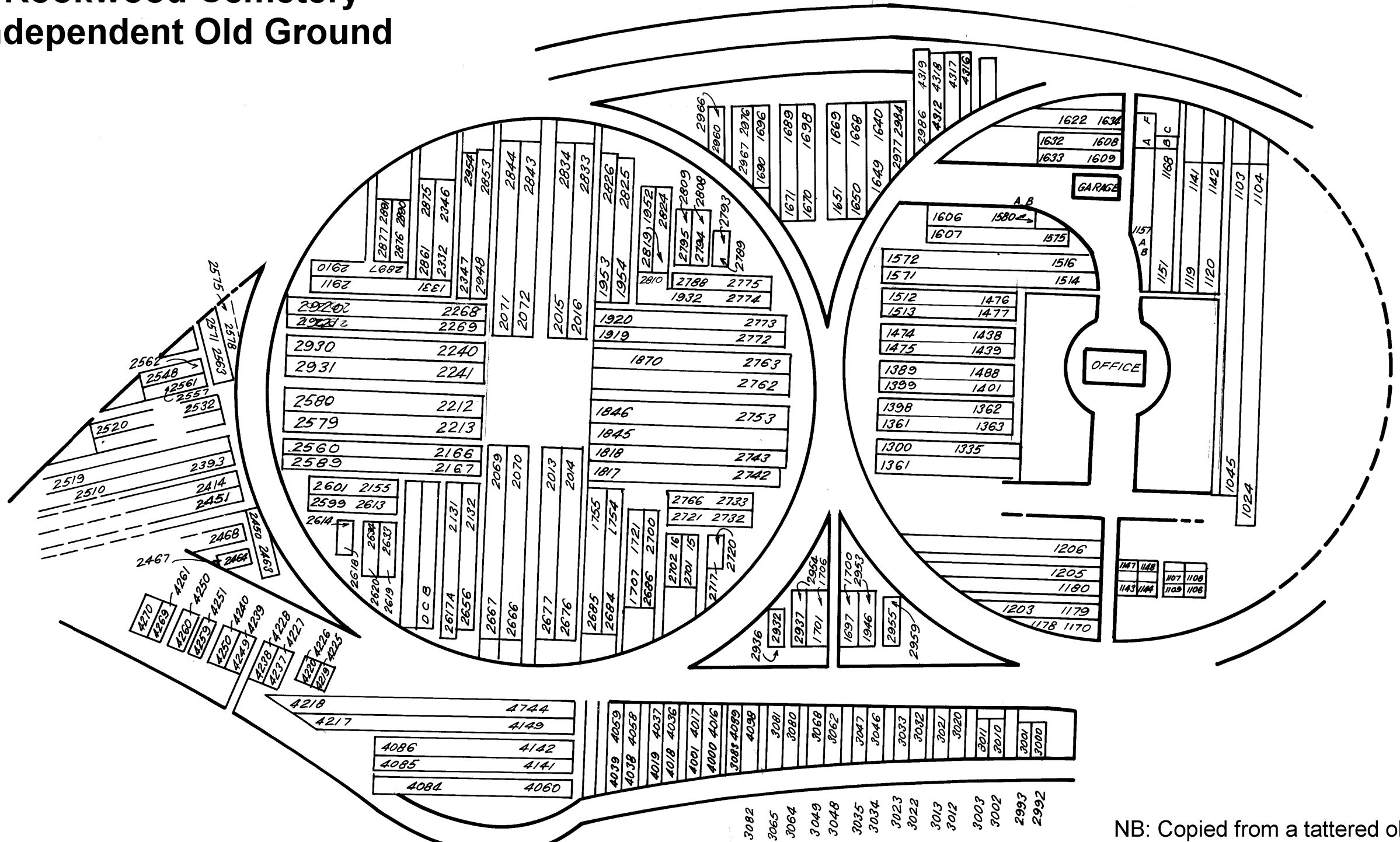
Layout of Independent Area



Adapted by Graham Lewis for
Society of Australian Genealogists
© Sydney 2002

Rookwood Cemetery

Independent Old Ground



Drawn by Joan Sigrist for
Society of Australian Genealogists
© Sydney 1984
SAG ref: 8/541

NB: Copied from a tattered old map - some details absent. The actual layout of graves within the various rows can be derived from the fiche and this CD.

Rookwood Cemetery
Independent Section H

62	130
171	115
172	116
289	233
290	244
403	347
404	344
521	465
522	466
523	579
524	580
753	697
754	698
867	811
868	812
985	929
986	930
1099	1043
1100	1044
1217	1161
1218	1162
1331	1215
1332	1216
1449	1393
1450	1394
1563	1507
1564	1508
1681	1625
1682	1626
1795	1739
1796	1740
1913	1857
1914	1858
2027	1971
2028	1972
2127	2071
2128	2072
2241	2185
2242	2186
2277	2221
2278	2222
2391	2335
2392	2336
2383	2337 A
2384	2338 A
2423	2401
2424	2402

118	173
	174
231	175
232	176
349	405A
350	406
463	407
464	408
581	637
582	638
695	639
696	640
813	869
814	870
927	871
928	872
1045	1101
1046	1102
1159	1103
1160	1104
1277	1333
1278	1334
1391	1335
1392	1336
1509	1565
1510	1566
1623	1587
1624	1568
1741	1797
1742	1798
1855	1799
1856	1800
1973	2029
1974	2030
2069	2031
2070	2032
2187	2209
2188	2210
2219	2211
2220	2212

Drawn by Joan Sigrist for
Society of Australian Genealogists
© Sydney 1984
SAG ref: 8/539

S E C T I O N 'G'

SECTION 'H'



PLANTATION

PLANTATION

8/540

Rookwood Cemetery
Independent Section J

Photocopy of original plan
SAG ref: 8/512

PLAN
OF
INDEPENDENT CEMETERY SECTION J

COMPRISING GRAVES NUMBER 1 TO 17108

ROOKWOOD

Scale 15 Feet to an Inch
Graves 3'6" x 8'0", Pairs 4'0"



SECTION G										SECTION H									
DRAINAGE										RESERVE									
169	170	171	396	397	398	399	624	625	626	627	852	853	854	855	856	857	858	859	860
168	172	173	394	395	400	401	622	623	628	629	850	851	852	853	854	855	856	857	858
167	174	175	392	393	402	403	620	621	630	631	848	849	850	851	852	853	854	855	856
166	176	177	390	391	404	405	574	575	632	633	846	847	848	849	850	851	852	853	854
165	178	179	388	389	406	407	576	577	634	635	844	845	846	847	848	849	850	851	852
164	180	181	386	387	408	409	614	615	636	637	842	843	844	845	846	847	848	849	850
163	182	183	384	385	410	411	612	613	638	639	840	841	842	843	844	845	846	847	848
162	184	185	382	383	412	413	610	611	640	641	838	839	840	841	842	843	844	845	846
161	186	187	380	381	414	415	608	609	642	643	836	837	838	839	840	841	842	843	844
160	188	189	378	379	416	417	606	607	644	645	834	835	836	837	838	839	840	841	842
159	190	191	376	377	418	419	604	605	646	647	832	833	834	835	836	837	838	839	840
158	192	193	374	375	420	421	602	603	648	649	830	831	832	833	834	835	836	837	838
157	194	195	372	373	422	423	600	601	650	651	828	829	830	831	832	833	834	835	836
156	196	197	370	371	424	425	598	599	652	653	826	827	828	829	830	831	832	833	834
155	198	199	368	369	426	427	596	597	654	655	824	825	826	827	828	829	830	831	832
154	200	201	366	367	428	429	594	595	656	657	822	823	824	825	826	827	828	829	830
153	202	203	364	365	430	431	592	593	658	659	820	821	822	823	824	825	826	827	828
152	204	205	362	363	432	433	590	591	660	661	818	819	820	821	822	823	824	825	826
151	206	207	360	361	434	435	588	589	662	663	816	817	818	819	820	821	822	823	824
150	208	209	358	359	436	437	586	587	664	665	814	815	816	817	818	819	820	821	822
149	210	211	356	357	438	439	584	585	666	667	812	813	814	815	816	817	818	819	820
148	212	213	354	355	440	441	582	583	668	669	810	811	812	813	814	815	816	817	818
147	214	215	352	353	442	443	580	581	670	671	808	809	810	811	812	813	814	815	816
146	216	217	350	351	444	445	578	579	672	673	806	807	808	809	810	811	812	813	814
145	218	219	348	349	446	447	576	577	674	675	804	805	806	807	808	809	810	811	812
144	220	221	346	347	448	449	574	575	676	677	802	803	804	805	806	807	808	809	810
143	222	223	344	345	450	451	572	573	678	679	800	801	802	803	804	805	806	807	808
142	224	225	342	343	452	453	570	571	680	681	798	799	800	801	802	803	804	805	806
141	226	227	340	341	454	455	568	569	682	683	796	797	798	799	800	801	802	803	804
140	228	229	338	339	456	457	566	567	684	685	794	795	796	797	798	799	800	801	802
139	230	231	336	337	458	459	564	565	686	687	792	793	794	795	796	797	798	799	800
138	232	233	334	335	460	461	562	563	688	689	790	791	792	793	794	795	796	797	798
137	234	235	332	333	462	463	560	561	690	691	788	789	790	791	792	793	794	795	796
136	236	237	330	331	464	465	558	559	692	693	786	787	788	789	790	791	792	793	794
135	238	239	328	329	466	467	556	557	694	695	784	785	786	787	788	789	790	791	792
134	240	241	326	327	468	469	554	555	696	697	782	783	784	785	786	787	788	789	790
133	242	243	324	325	470	471	552	553	698	699	780	781	782	783	784	785	786	787	788
132	244	245	322	323	472	473	550	551	700	701	778	779	780	781	782	783	784	785	786
131	246	247	320	321	474	475	548	549	702	703	776	777	778	779	780	781	782	783	784
130	248	249	318	319	476	477	546	547	704	705	774	775	776	777	778	779	780	781	782
129	250	251	316	317	478	479	544	545	706	707	772	773	774	775	776	777	778	779	780
128	252	253	314	315	480	481	542	543	708	709	770	771	772	773	774	775	776	777	778
127	254	255	312	313	482	483	540	541	710	711	768	769	770	771	772	773	774	775	776
126	256	257	310	311	484	485	538	539	712	713	766	767	768	769	770	771	772	773	774
125	258	259	308	309	486	487	536	537	714	715	764	765	766	767	768	769	770	771	772
124	260	261	306	307	488	489	534	535	716	717	762	763	764	765	766	767	768	769	770
123	262	263	304	305	490	491	532	533	718	719	760	761	762	763	764	765	766	767	768
122	264	265	302	303	492	493	530	531	720	721	758	759	760	761	762	763	764	765	766
121	266	267	300	301	494	495	528	529	722	723	756	757	758	759	760	761	762	763	764
120	268	269	298	299	496	497	526	527	724	725	754	755	756	757	758	759	760	761	762
119	270	271	296	297	498	499	524	525	726	727	752	753	754	755	756	757	758	759	760
118	272	273	294	295	500	501	522	523	728	729	750	751	752	753	754	755	756	757	758
117	274	275	292	293	502	503	520	521	730	731	748	749	750	751	752	753	754	755	756
116	276	277	290	291	504	505	518	519	732	733	746	747	748	749	750	751	752	753	754
115	278	279	288	289	506	507	516	517	734	735	744	745	746	747	748	749	750	751	752
114	280	281	286	287	508	509	514	515	736	737	742	743	744	745	746	747	748	749	750
113	282	283	284	285	510	511	512	513	738	739	740	741	742	743	744	745	746	747	748

SECTION K



POOKWOOD
Scale 15 Feet to an inch :
Graves 3'6" x 8'0", Path 4'0"

Scale 15 Feet to an inch :
Graves 3'6" x 8'0", Paths 4'0"



SECTION

4

[illegible]

Photocopy of original plan
SAG ref: 8/513

[Jewish](#)

A draft map of the general layout of this area is available by clicking [here](#).

Section 1

This section is divided by a path.

Section 4

Row 11 -portions of headstones were found near a tree, and have been transcribed at the end of this row.

Section 12

The numbers from Row 10 onwards flow in reverse order.

Section 12

A flagpole stands at the start of this section, with the following inscription on a large marble plaque – "In memory of those Jewish Members of the Commonwealth & Allied armed forces who served in WWII, Korea & Vietnam."

Section 14

Graves G, H – see middle of Row 36

Graves 858-976 – see Row 38

Section 15

At the edge of this section, between watercourse and road, there is a black marble plaque, within a square enclosure with concrete wall and iron gate, inscribed as follows:

"Gnizath Shemoth (Repository of outworn rituals and holy books). Established by the Sydney Chevra Kadisha and consecrated by the Sydney Rabbinate, in the presence of the Board of Management of the Sydney Chevra Kadisha. Sunday, 22 Aug 1965."

Grave numbers generally run from 1-894, but Graves 911-937 are scattered through the rows. The graves that are out of sequence are as follows:

Graves BB-PP – see in front of Row 1

Graves B-K – see Row 28

Graves N-P, W – see Row 29

Graves 729-735 – see Row 31

Graves 911-912 – see Row 32

Graves 913, 948-950 – see Row 33

Graves 942-944 – see Row 35

Graves 922-926 – see Row 36

Graves 863-884 – see Row 36 (not in numerical order)

Graves 929-937, 887-896 – see Row 37

Graves 888-894 – see Row 38

Section 16

Graves E-J – see Row 2

Grave numbering from Row 27 is confusing, with some in reverse order and some duplication:

Graves 536-551, 743-739 – see Row 27

Graves 559-552, 566-560, 731-738 – see Row 28

Graves 710-733 – see Row 29

Graves 572-585, 700-709 – see Row 30

Graves 688-699, 586-601 – see Row 31

Graves 601-615, 677-688 – see Row 32

Graves 665-676, 617-627 – see Row 33

Graves 628-636, 655-665 – see Row 34

Graves 638-637, 647-654 – see Row 35

Graves 639-648 – see Row 36

Section 18

Graves 348-361 – not sighted

Section 20

Seven headstones are located on the border of this section and are listed after Row 4.

Section 21

Three graves located at the end of this section are listed with Row 35.

Section 22

Grave numbers in Rows 42 and 43 are not all confirmed.

Graves in Rows 47 and 74 are numbered in reverse order.

Section 23C

A map of this section, detailing the location of each grave is available by clicking [here](#)

Section 23D

A map of this section, detailing the location of each grave is available by clicking [here](#)

Section 23E

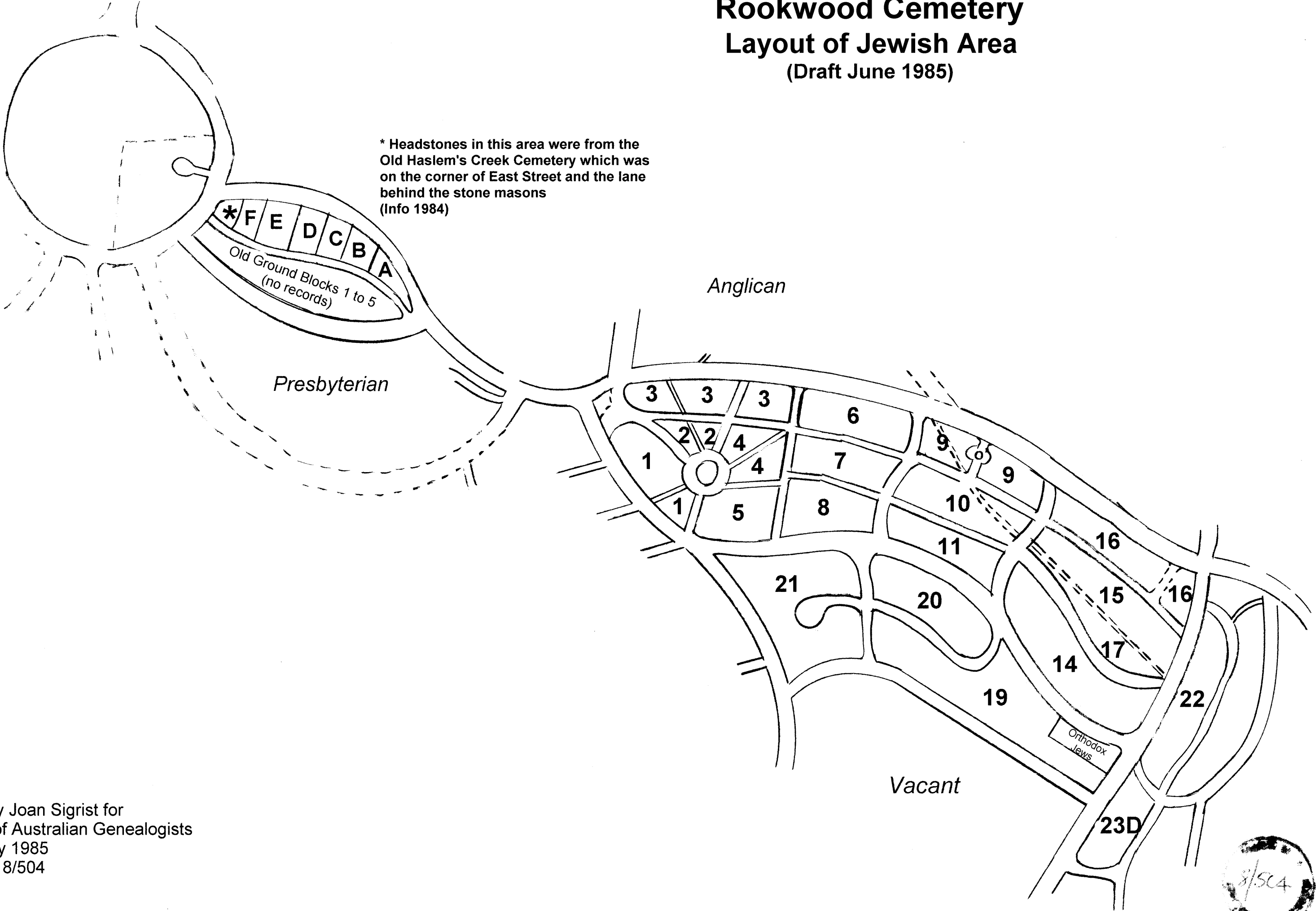
Grave numbers are not available from this Row 11 to the end of the section.

See also [Old Jewish](#)

Rookwood Cemetery

Layout of Jewish Area

(Draft June 1985)

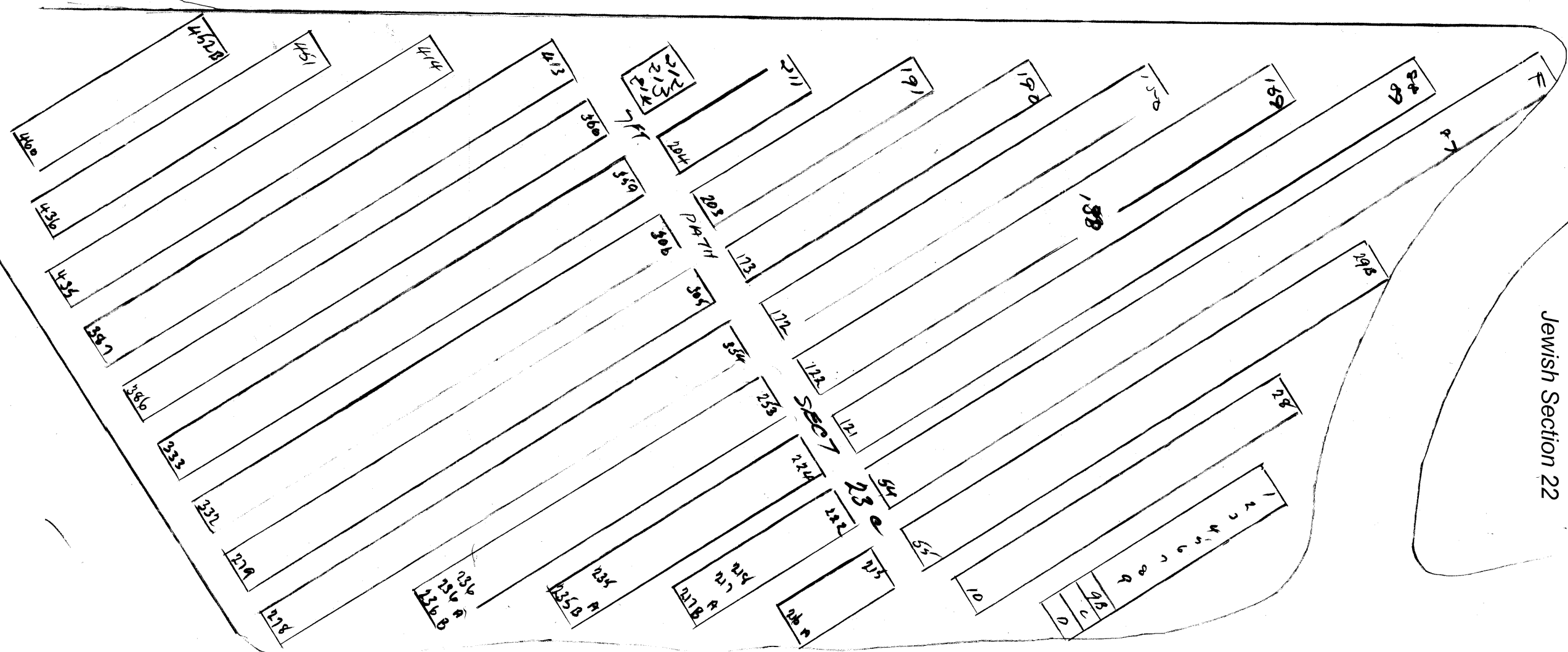




Rookwood Cemetery Jewish Section 23C

(Draft 1989)

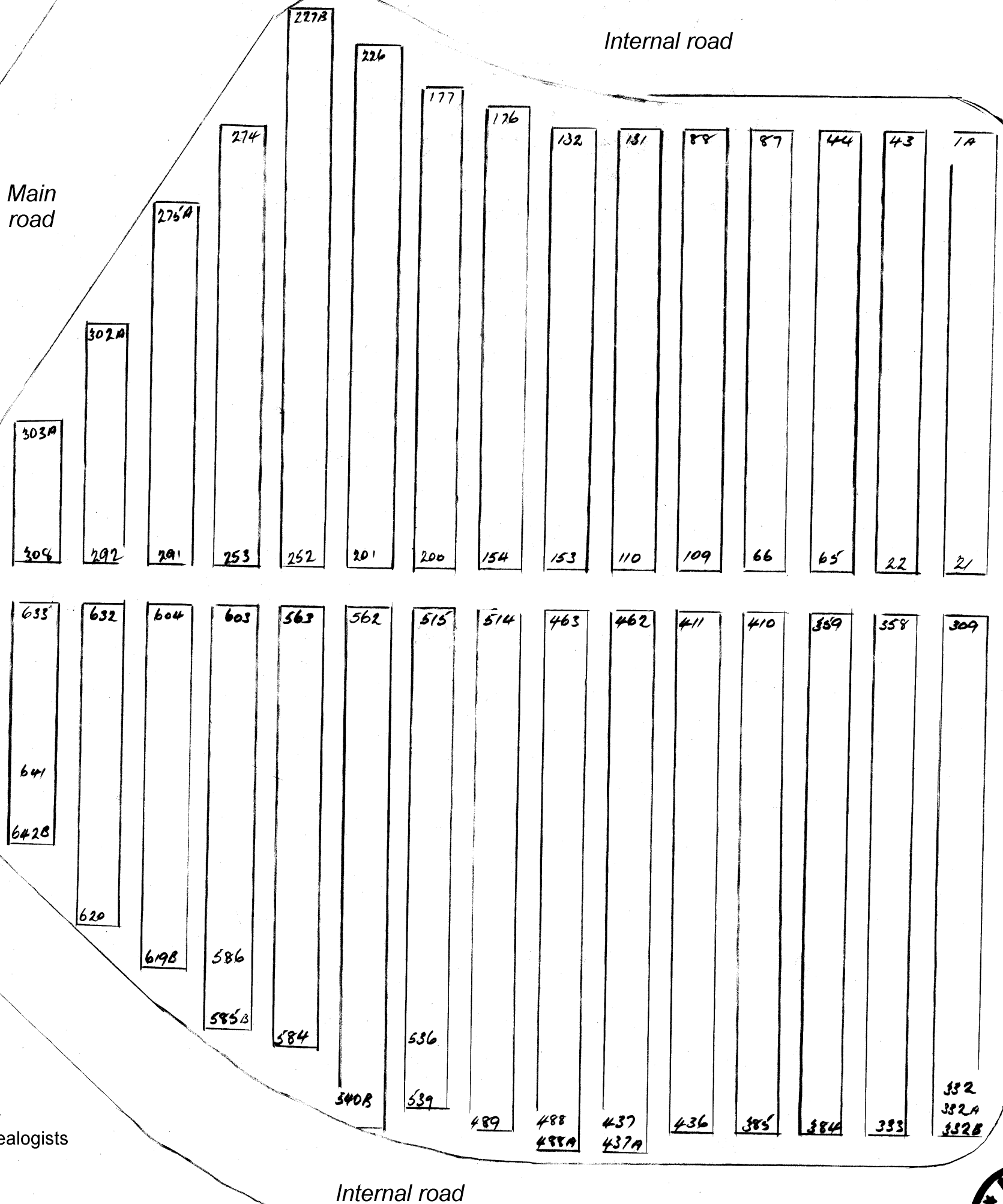
Main road



NB: The layout of graves within rows,
as shown on the final fiche and this CD,
varies in places from what is shown here

Jewish Section 23D

(Draft 1989)



Drafted by Joan Sigrist for
Society of Australian Genealogists
© Sydney 1989
SAG ref: 8/506

NB: The layout of the graves within rows,
as shown on the final fiche and this CD,
varies in places from what is shown here.



Korean

A section of the [Catholic Mortuaries 2 & 3](#) at Rookwood is identified for the burial of people of Korean ethnic origin.

[Latvian](#)

Section F of the Lutheran area of Rookwood is identified for the burial of people of Latvian ethnic origin. A map of this section, detailing the location of each grave is available by clicking [here](#).

Lutheran

About 3,000 transcription numbers in these sections are duplicated within the Anglican sections. The duplicated numbers are 177926-180781. Searches by transcription number in this range will generally provide two hits, where only one should generally result. Researchers should generally be able to readily identify the desired target transcription.

Section A

Graves 270-300 – see Rows 20, 21.

Graves 301-319 – see Row 22.

Section D1

Graves 304, 305, 308, 309 – see Row 1.

Rows 4 and 5 were transcribed as one.

Section D3

Rows 1-2 – Graves 1A-50A.

Rows 3-4 – Graves 150-200.

Graves 180-200 – see Row 3.

Section E

Graves 31-204 – not sighted.

Section F

Row numbers are not available for this section. Graves are listed in strict numerical order and do not indicate the location of the grave sites. Two inscribed stones are described as "at the end of two rows" – a Nearby graves report will indicate if your headstone is one of these.

Graves 632-700 – not sighted.

Lutheran War Memorial

A plaque attached to an iron fence, near the memorial and a large oak tree, reads: "Memorial oak planted by General Consul Dr Busing on 23 Nov 1930, at the unveiling of the Roll of Honour of those who died in internment. Erected with the aid of contributions from fellow-countrymen in Australia. The German Graves Commission, Tadsen, Chairman. Blaesing, Burggraf, Schenk, Seidel, Simon (Members)."

The details transcribed from the memorial were grouped in tens for indexing purposes only – they do not indicate the arrangement on the memorial.

Estonian Repository Wall Niches

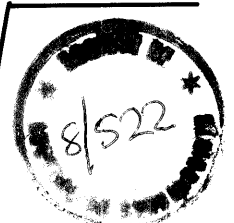
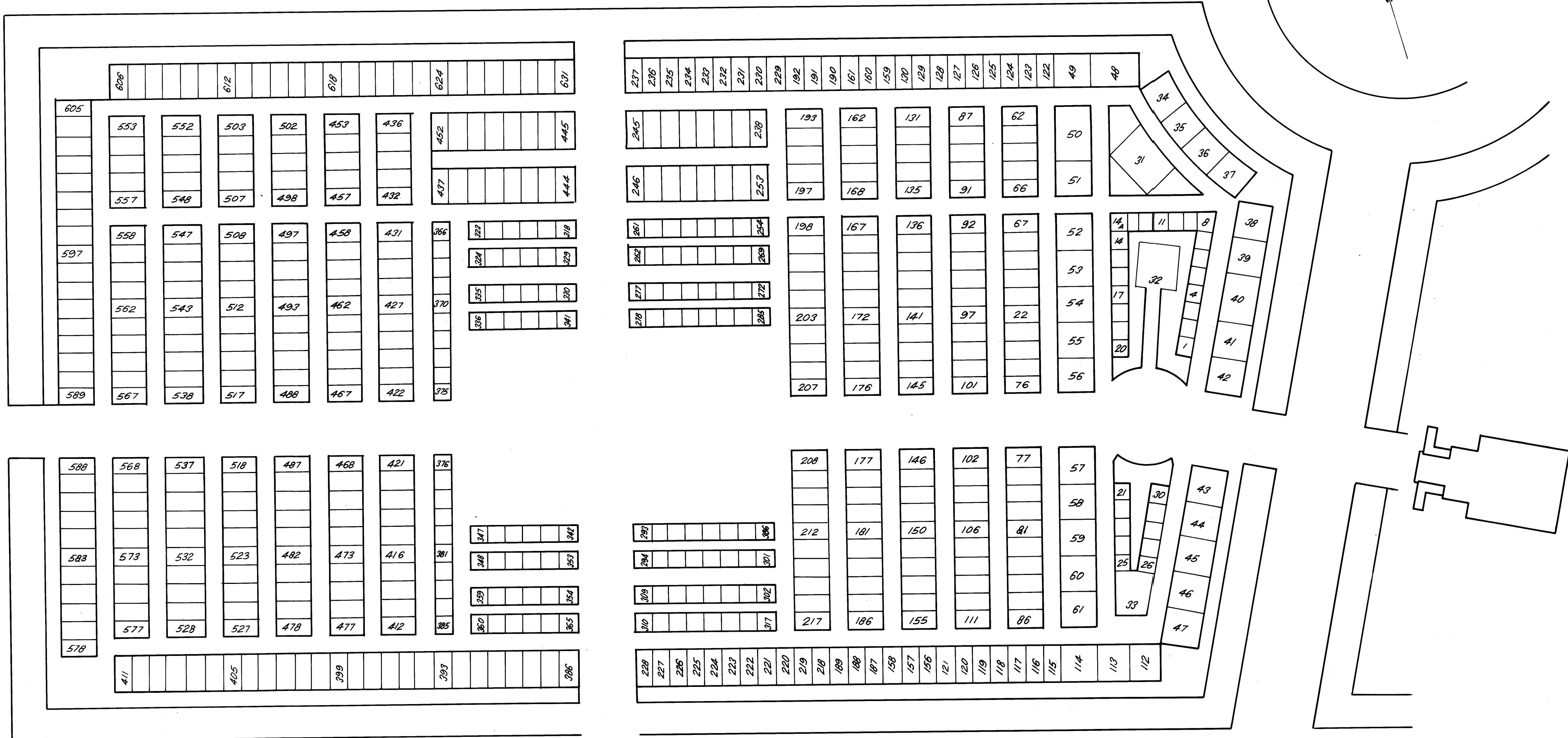
A plaque set into the wall reads: "Repository Wall. Erected by the Sydney Estonian Lutheran St. John's congregation. Consecrated by Rev. Einar Kiviste on 17 November, 1968."

Latvian Wall Niches

A plaque set into the wall reads: "Repository Wall. Erected by the Sydney Estonian Lutheran St. John's congregation. Consecrated by Rev. Einar Kiviste on 17 November, 1968."

Niches 324-333 – not sighted.

Rookwood Cemetery Lutheran Area Section F - Latvian



Methodist

Section 1AW

This section was transcribed in two large blocks running parallel to each other:

Part 1 – Graves 1-440,

Part 2 – Graves 441-1050,

Section 2AW

Graves 1911-199 were not sighted.

Section 3A

Graves 1-40 were not sighted.

Section 3B

Graves 1-40 were not sighted.

Graves 448-531 do not exist – resumed for drain.

Section 3C

Grave 107A – see Row 4,

Sections 3W, 4W, 5W

The "W" indicates "west".

Row numbers are not available in Section 5W.

Graves 1-329 – see Section 5W,

Graves 330-538 – see Section 4W,

Graves 539-593 – see Section 5W,

Graves 594-610 – see Section 4W,

Graves 611-658 – see Section 3W,

Graves 659-700 – see Section 4W,

Graves 701-739 – see Section 3W,

Graves 740-747 – see Section 4W,

Graves 748-1186 – see Section 5W

Section 4

Graves 1-59 do not exist.

Graves 757-832, 910-941, 961-999, 1070-1114, 1127-1172, 1235-1280, 1315-1354, 1409-1448, 1508-1542, 1580-1619, 1692-1725, 1747-1779, 1865-1903 are vacant ground, used for a drain.

Sections 4B, 5A

This section is an area where headstones are sparse and scattered – row numbers and some grave numbers in large grassed areas are an estimate only and should not be regarded as accurate.

Section 5B

This section is an area where headstones are sparse and scattered – row numbers are not available and grave numbers are shown only when inscribed on kerbs.

Lawn Section A

Formerly Methodist, now [Uniting Church](#).

Lawn Section B

Formerly Methodist, now [Uniting Church](#).

Graves 136-149 – not sighted.

Lawn Section C

Formerly Methodist, now [Uniting Church](#).

Memorial Wall Niches

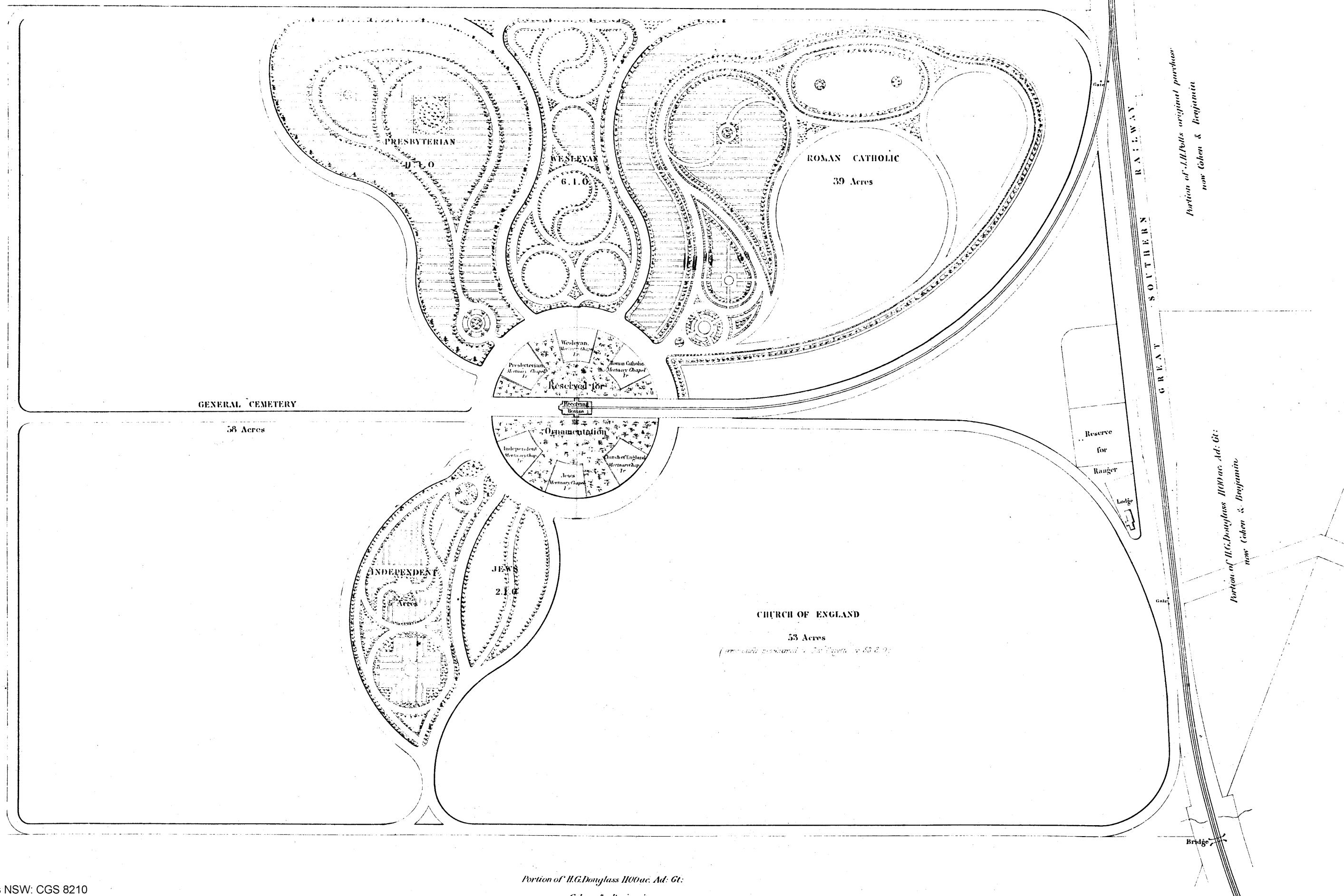
Formerly Methodist, now [Uniting Church](#).

Haden's Creek
1 River at Station 1

Shewing the appropriations for the various Religious Denominations

John Sunderland
1000 ac

G. Sunderland
Gillies



[Old Anglican](#)

A map of this area showing the general layout of the sections is available by clicking [here](#).
A copy of the handout provided by the Anglican & General Trust, Rookwood, is [here](#).

Section 2

Apart from about 800 graves, this section contains three large memorials:-

Burdekin Memorial 1

Burdekin Memorial 2

Poate vault

which have been transcribed and included on the CD. Printing a Nearby graves report will provide a physical description of the memorials and their situation.

Section 4 (including Section 4 Naval)

This section is made up of 5 separate blocks. The second block from the road is an area dedicated to naval personnel. Owing to the irregular shape of this block it has been transcribed and included within this section.

Section A

Grave 625 – not sighted

Section BB

Graves 224-233 – not sighted

Section CC

Graves 1095, 1238, 1239 – not sighted.

Section DD

This section includes a small area dedicated to naval personnel. It commences at the end of Row 7 and finishes at the end of Row 14 – see Section DD (Naval).

Graves 310-326, 364-380, 414-432, 460-472, 510-526, 564-580, 614-622, 660-672 – see Section DD (Naval).

Section DD (Naval)

This area is dedicated to Royal Naval personnel, commencing at the end of Row 7 and finishing at the end of Row 14 within Section DD. The site is kerbed and surrounded by a chain and anchor fence.

Graves 1-272 – see Rows 1-6, Section DD.

Graves 273-309 – see start of Row 7 Section DD.

Graves 327-363, 381-413, 433-459, 473-509, 527-563, 581-613, 623-659 – see Section DD.

Plots 375-380 are covered with a large central sandstone block. The south end is inscribed with a ship's wheel and the words – 'England expects that every man will do his duty.' The north end is inscribed – 'Erected by officers & men of HMS Nelson, in memory of shipmates who died during the Commission 1885-1888.'

Plot 616 has one central monument, inscribed – 'Erected by the ship's company HMS Cambrian, in memory of shipmates who died during the Commission on the Australian Station 1905-1907.'

Section EE

This section includes a small area dedicated to military personnel. It commences at the beginning of Row 7 and finishes at the beginning of Row 14 – see Section EE(M).

Graves 381-396, 446-461, 507A-522, 572A-587, 641-656, 706-721, 768-783, 833-848 – see Section EE(M).

Section EE(M)

Section EE (Military) is an area dedicated to military personnel, commencing at the beginning of Row 7 and finishing at the beginning of Row 14 within Section EE. Memorials are small identical bronze plaques cemented to concrete blocks.

Graves 1-380 – see Rows 1 to 6, Section EE.

Graves 397-445 – see end of Row 7, Section EE

Graves 462-510, 523-575, 588-640, 657-705, 722-767, 784-832, 849-900 – see Section EE.

Old Portion G

The area shown in the registers as Old Portion G is located at the end of Sections RR and RRR. For further information about this section please refer to the Anglican Office, Rookwood Cemetery.

The number of rows in the area at the end of Section RRR is approximate.

Section J

In 1982 approximately 650 grave sites in this section were covered to make way for the construction of a new road. SAG transcribed the headstones in 1981 and has included them on this CD. This information was supplemented from the details in the burial registers held at the Anglican Office, Rookwood Cemetery. See here for important further detail.

For further information about these plots, contact the Anglican Office, Rookwood Cemetery.

Section L

This section covers an area where headstones were scattered and grave numbers not inscribed on kerbs. Every effort has been made to provide an accurate estimate of row numbers and grass plots.

For further information about this section refer to the Anglican Office, Rookwood Cemetery.

Section N

This section is the Paupers area of the Old Church of England Cemetery. Few headstones occur, as plots were used for multiple burials of unrelated burials taking place on the same day. Just five headstones were transcribed in 1981. Rows were not

discernable and the number of grass plots was estimated. The northern 25% of this section was covered by a road in 1985.

Section O

There are no headstones in this section, which is located at the end of Section P. It is comprised of approximately 4 rows. For further information about this area refer to the Anglican Office, Rookwood Cemetery.

Sections P, R

These sections cover an area where headstones are scattered and many grave numbers are not inscribed on kerbs. The number of grass plots is estimated and the beginning and end of some rows are approximate.

For further information about these sections refer to the Anglican Office, Rookwood Cemetery.

Section SS

Row numbers are not available in this section.

Section T

A number of headstones were found covering the drain at the side of the road near Section T and these have been listed before Row 1 of this section.

Graves 1572-1611 – not sighted

Graves 10243-10282 – not sighted

Graves 10369-10391 – not sighted

See also [Anglican](#)

Old Catholic Mortuary 1

A plan showing the general layout of this area of the cemetery is [here](#).

Sections A, AA

All grave numbers and kerbing have been removed from these sections. The number of plots per grave can only be estimated.

Monuments Section

All grave numbers were taken from the burial register, Catholic Office, Rookwood.

Vaults Section

All vault numbers were taken from the Section Book, Catholic Office, Rookwood.

Sections B, BBB

These sections are divided into a number of areas, relating to particular religious orders and each having its own row numbering – to locate a particular grave it is essential to view a Nearby graves report and note the religious order to which the row number relates.

Section BB (Religious Orders)

This section is divided into a number of areas, relating to particular religious orders and each having its own row numbering – to locate a particular grave it is essential to view a Nearby graves report and note the religious order to which the row number relates.

Headstones for some orders record only surnames and religious names – that is, not the name given at birth. The First name field on the CD is therefore blank, with the religious name recorded in the Transcription field. For example, a girl born as Freda Casey may have become as a nun Sister Mary Teresa, and be recorded on her headstone as Sr Mary Teresa Casey. This CD records her as Casey in the Last name field, and as Sr Mary Teresa in the Inscription field.

The orders affected are: Sisters of Charity; Ursuline Sisters; Dominican Sisters; Good Samaritan Sisters; Presentation (Wagga); Good Shepherd; Poor Clares; Presentation Sisters (Lismore); Loreto Sisters; and Franciscan Missionaries of Mary.

Surnames and forenames were found on only some headstones of the Little Company of Mary.

No grave numbers were recorded on the headstones for the following orders: Carmelite; and Presentation Sisters (Lismore).

Section CC

This section has numbered blocks as well as numbered rows. It is essential to view a Nearby graves report to identify whether the "row" of a grave is in fact a block or a row.

Graves within the seven blocks are listed in numerical order and do not indicate location on the ground. For assistance in locating these graves, please refer to the Catholic Office, Rookwood.

Sections E, EE, FF

These sections have numbered blocks as well as numbered rows. It is essential to view a Nearby graves report to identify whether the "row" of a grave is in fact a block or a row.

Section GG

In 1982 approximately 410 grave sites from Section GG were covered to make way for the construction of a new road. These sections had few headstones, which SAG transcribed in 1981 and has included on this CD. This information was supplemented from the details in the burial registers held at the Catholic Office, Rookwood Cemetery. See here for important further detail.

The resumed grave numbers are 546, then 607-1016.

Unfortunately it has not been possible to retain row numbers, which cease after Row 25.

Section J

Section J forms a circular pattern containing vaults and some graves. Vault and grave numbers are shown when found inscribed on kerbs.

Section K

There are two series of numbers in some rows:

Graves 1390-1448 – see Section KA.

Graves 1418-1448 – duplicated in Section KA, and also in the section books, held at the Catholic Office, Rookwood Cemetery.

Graves 1933-1962 – see end of Row 25

Graves 1900-1939 – see start of Row 26

Graves 1459-1492 – see end of Row 26

Graves 1867-1855 – see end of Row 27

Graves 1834-1866 – see start of Row 28

Graves 1527-1560 – see end of Row 28

Section KA

Section KA is an extension of the grave numbering system in Section K., containing Graves 1390-1448.

Graves 1418-1448 are duplicated in Section K and also in the section books, held at the Catholic Office, Rookwood Cemetery.

Section L

This section has numbered blocks as well as numbered rows. It is essential to view a Nearby graves report to identify whether the "row" of a grave is in fact a block or a row.

Block No. 2 was not sighted – its exact location is unknown. The section book at the Catholic Office, Rookwood Cemetery, indicates that this block has a total of 22 plots, but only one of them with an interment.

Graves 141-161 (between Rows 7/8) were not sighted.

Graves 213-249 (between Rows 9/10) were not sighted.

Section Lawn Circle (Religious Orders)

Headstones for some orders record only surnames and religious names – that is, not the name given at birth. The First name field on the CD is therefore blank, with the religious

name recorded in the Transcription field. For example, a boy born as John Ryan may have become as a priest Brother Benedict, and be recorded on his headstone as Brother Benedict Ryan. This CD records him as Ryan in the Last name field, and as Bro. Benedict in the Inscription field.

The orders affected are:: Passionists; Hospitalier Brothers of St. John of God.

Transcriptions in the area for Society of the Blessed Sacrament were translated from the Latin.

Section Lawn Circle (Civil)

Graves 624-626 – see Lawn Circle (Religious Orders).

Graves 627-782 – allocated to religious orders – no evidence of interments at August, 1985.

Section LS – Lawn Section (Priests)

Located near the Chapel of St. Michael.

Sections O, P, Q

In 1982 a number of grave sites in these sections were covered to make way for the construction of a new road. These sections had few headstones, which SAG transcribed in 1981 and has included on this CD. This information was supplemented from the details in the burial registers held at the Catholic Office, Rookwood Cemetery. See here for important further detail.

The grave numbers affected are: Section O – 302-602; Section P – 300-787; Section Q – 330-650.

Unfortunately it has not been possible to retain row numbers – none are available in Section P, and none beyond Row 7 in Sections O and Q.

Section T

Section T includes a special area devoted to naval personnel, separate from other portions of Section T. Only a few of these plots are inscribed with grave numbers. All of them have standard white military headstones, with a lawn surface and no kerbs. All spelling and abbreviations for rank etc. are as recorded on the headstone.

Grave numbers are not inscribed on the headstones from Row 2 on.

Section U

This section is unconsecrated ground that was used for the burial of stillborn or very young children.

In 1982 all (approximately 143) grave sites in this section were covered to make way for the construction of a new road. The section had few headstones, which SAG transcribed in 1981 and has included on this CD. This information was supplemented from the details in the burial registers held at the Catholic Office, Rookwood Cemetery. See here for important further detail.

Section Vaults

Vault numbers are only shown when they were found inscribed on the outside face of a vault. Where vault numbers are known these follow in more or less numerical order.

All names appearing in vault titles have also been listed for indexing purposes. The reference, 'No inscription' indicates no interment was found recorded in that name.

Section 1 (Vaults)

Section 1 is a circular area, containing vault sites. Vault numbers are shown when found inscribed on kerbs.

Section 2 (Vaults)

These are located at the north-west edge of Section 3 – [click here](#) to see a map of Sections 2, 3 & 4.

Vault numbers are not available for this section.

Section 3

A map of Sections 2, 3 & the lower part of Section 4 is available, indicating the location of the various lots, rows and blocks that make up this section – [click here](#)

Grave numbers within Lots 1-10 and Blocks 1-17 appear in numerical order.

Grave 26 within Block 10 does not exist.

Grave 33 within Block 11 does not exist.

Block 12 does not exist.

Block 14 was not sighted.

Graves 7-18 in Block 16 – see Block 17.

Graves 1-6 and 9-24 in Block 17 – see Block 16.

Graves 25-30 in Block 18 – see Block 19.

Graves 31-42 in Block 19 – see Block 18.

Section 4

The first 120 graves of Section 4 are recorded as burials in 'unconsecrated ground' in the section books held by the Catholic Office, Rookwood Cemetery. A few of these are adults but they are mainly stillborn children. The unconsecrated ground appears to be situated in the central area of the section.

Graves 121-410 (consecrated ground) progress by a pathway towards the lower portion of Section 4. Their exact location is unknown, with the exception of those where headstones were sighted. These graves are listed where they were found – not in numerical order, interspersed through Rows 30-37.

The section generally uses the alternate numbering system, apart from graves 121-410 above, but there are quirks in Rows 42 and 44.

Grave 208 – see Row 30

Graves 230, 252, 253 – see Row 31.

Graves 287, 294, 299, 305 – see Row 33

Graves 314, 358 – see Row 34

Grave 376 – see Row 36

Grave 399 – see Row 37

Graves 2197, 3001 – see Row 42

Graves 3037, 3071 – see Row 44

Section 4 also has 39 "blocks", each with its own numbering system. The exact location of most blocks is unknown, the exceptions being the blocks sighted: – Nos. 4, 9, 15, 20, 24, 27, 30, 35 and 39.

The blocks that remain unsighted have been included on the CD, showing the total number of grave plots per block, each plot having at least one interment. This information was taken from the section books, held by the Catholic Office, Rookwood Cemetery.

Section 5

All grave numbers and kerbs have been removed from this section. The number of plots per grave have been calculated as accurately as possible.

Grave numbers in some rows follow the alternate system, e.g. 22, 24, 26, 28, or 21, 23, 25, 27, etc. Other rows have grave numbers in strict numerical order.

Row 1 – sequential

Rows 2-9 – alternate

Rows 10-11 – sequential

Rows 12-19 – alternate

Rows 20-21 – sequential

Rows 22-29 – alternate

Rows 30-31 – sequential

Rows 32-39 – alternate

Rows 40-41 – sequential

Rows 42-49 – alternate

Rows 50-51 – sequential

Rows 52-59 – alternate

Row 60 – sequential

Sections 6, 7, 8

Sections 6, 7 and 8 cover an area where headstones are sparse and scattered, with all kerbs removed. Row numbers are not available and the graves are listed in numerical order without any attempt to depict their order on the ground.

Grave numbers have been taken from burial registers held at the Catholic Office, Rookwood Cemetery. The total number of graves in Section 8 is unknown.

Section 10

From Row 32 the rows reverse direction and (keeping parallel with Rows 1-31) turn back towards the railway line.

Section 10:10

Section 10:10 is a small area within Section 10, comprising a total of 90 graves. As only three headstones were transcribed in this area no row numbers were allotted and they are simply listed in grave number order.

Section 12

The section follows sequential numbering, reaching Grave 1219 in Row 40. However, beyond that row there are a few more graves, with those that are numbered being well out of sequence – Graves 170, 171 and 386.

Section 13

In 1982 286 grave sites in this section were covered to make way for the construction of a new road. These sections had few headstones, which SAG transcribed in 1981 and has included on this CD. This information was supplemented from the details in the burial registers held at the Catholic Office, Rookwood Cemetery. See [here](#) for important further detail.

The grave numbers affected are: 1026-1312.

Unfortunately it has not been possible to retain row numbers, which cease after Row 12.

See also [Catholic Mortuaries 2 & 3](#)

[Old Chinese](#)

Translations conclude at the end of Row 10.

See also Independent Methodist

[Old General](#)

Chinese headstones (area following Row 8)
Row numbers are not available for this section.

See also [Chinese](#)

[Old Jewish](#)

The Old Jewish area has been divided into Parts A and B. Graves are listed in their order of appearance within the rows. Grave numbers are shown only when they were found inscribed on kerbs.

There are few graves in Part A and the numbering system is not apparent. In Part B most have numbers and the system is sequential, apart from the first part of Row 6, which is un-numbered and where there are more graves than missing numbers.

Information for partly or completely illegible headstones transcribed in 1985 has been based on lists compiled in the early 1970s by Mr T Newman, of the Australian Jewish Historical Society, Sydney.

Dates of death have where necessary been translated from Hebrew.
Graves 791-830 – not sighted.

See also [Jewish](#)

[Old Presbyterian](#)

A map showing the general layout of this area and indicating the grave numbering of each section is available by [clicking here](#).

Sections 1, 1A, 1B

These sections are circular and row numbers are not available. Graves are listed in strict numerical order and do not indicate the location of the grave sites. For the location of graves within these sections, see the map referred to above.

Section 1C

This section is formed by a series of four major circles and row numbers are not available. Graves are listed in strict numerical order and do not indicate the location of the grave sites – see instead the map referred to above.

Not all vaults and/or monuments were inscribed with grave numbers – missing numbers were taken from the burial registers at the Independent Office, Rookwood Cemetery.

Section 1D

Row numbers are not available for this section, but a map showing the arrangement of graves is available by [clicking here](#).

Section 2A

This section is divided into two parts:

Part 1 – Graves 1625-1657 – commences at Row 4 and continues to Row 9 – alternate numbering.

Part 2 – Graves 3321-3336 – commences at Row 1 and continues to Row 9 – sequential numbering.

Grave 1657 – see end of Row 9.

Section 4

At the end of Rows 13 & 14 is a sandstone vault with a broken iron door and no inscriptions. This was known as the Trustee's Vault and was used to hold coffins which were delivered to Rookwood by train and held overnight for funeral services the following day.

Section 5A

This section is divided into two parts – each using alternate numbering.

Part 1 – Graves 2571-3098 – commences at Row 1 and continues to Row 18

Part 2 – Graves 4349-4370 – commences at Row 15 and continues to Row 18

Section 6

There is a gap in the grave numbering between Sections 6 and 6A:

Graves 1625-1657 – see Section 2A

Graves 1658-1691 – see Section 1A

Graves 1692-1727 – see Section 1B

Graves 1728-1797 – see Section 3A

Section 6A

Where necessary, grass plots have been given grave numbers to assist researchers in locating graves.

Section 6B

Grave numbers use alternate numbering. Some grass plots in this section were given grave numbers to assist researchers in locating graves.

Section 6C

Where necessary, grass plots have been given grave numbers to assist researchers in locating graves.

Section 6C has been divided into three parts, each using alternate numbering:

Part 1 – Graves 3099-3248 – commences at Row 1 and continues to Row 4

Part 2 – Graves 4371-5394 – commences at Row 1 and continues to Row 34

Part 3 – Graves 7728-9543 – commences at Row 35 and continues to Row 76

Section 1

This section is circular and row numbers are not available.

Section 2

Row numbers are not available for this section. Graves are listed in strict numerical order and do not indicate the location of the grave sites.

Section 1D

This section is formed by a series of various circular and semi-circular patterns and row numbers are not available. Graves are listed in strict numerical order and do not indicate the location of the grave sites.

Not all vaults and monuments were inscribed with numbers and the missing numbers were taken from the burial registers, at the Independent Office, Rookwood Cemetery.

Section 1E (New Division)

This section is formed around two major circles and row numbers are not available.

Graves are listed in strict numerical order and do not indicate the location of the grave sites. Not all graves were inscribed with grave numbers and the missing numbers were taken from the burial registers, at the Independent Office, Rookwood Cemetery.

Grave 67 – see Grave 64B.

Section 2C

Grave 2025 – see beginning of Row 8.

Section 2D

This is a small section, of just 40 graves. Only one headstone was located. Row numbers are not available.

Section 3D

Grave numbers extended from 41 to 172, but only two of these were used for interments. No headstones were located.

The section was eventually incorporated into the Presbyterian Lawn Section B.

Section 4C

Grave numbers extend from 173 to 408.

Section 5C

This section is divided into 3 parts:

Part 1 – Graves 3997-5538 – commences with Row 1 and continues to Row 47

Part 2 – Graves 7239-7816 – commences with Row 1 and continues to Row 9

Part 3 – Graves 8827-9810 – commences with Row 10 and continues to Row 21

Parts 2 and 3 are located behind (Presbyterian) Section 1D.

Row 1 – sequential numbering.

Row 2 – alternate numbering.

Row 3 – sequential numbering returns then reverts to alternate – for Graves 7319-7329 , see end of Row 2

Row 21 – Graves 1252, 1254 not sighted.

Section 5D

Row 1 – sequential numbering.

Rows 2-21 – alternate numbering.

Row 21 – Graves 1252, 1254 not sighted.

Row 22 – sequential numbering returns, then reverts to alternate.

Row 23 – sequential numbering.

Rows 24, 25 – alternate numbering.

Row 26 – sequential numbering returns, then reverts to alternate.

Rows 28, 29 – alternate numbering and arranged back to back.

Graves 1599, 1601, 1603, 1605 – see start of Row 29.

Section 5F

Graves 1 to 218 do not exist.

Row 1 – alternate numbering.

Row 2 – sequential numbering commences and then reverts to alternate.

Graves 244-343 do not exist.

Graves 424, 426, 428, 430, 432, 434-512 do not exist.

Graves 613-622, 623, 625, 627 do not exist.

Grave 678 – see start of Row 8.

Graves 804, 806 do not exist.

Grave 1358 – see end of Row 14.

Section 5G

Graves 1 to 100 do not exist.

The following graves were incorporated into the Lawn Cemetery – 1141-1190, 1218-1264, 1297-1342, 1376-1422, 1454-1504, 1538-1666.

Section 5H

Graves 1 to 55 do not exist.

Section 6D

Section 6D has been divided into five parts:

Part 1 – Graves 1-1999 – commences at Row 1 and continues to the centre of rows 33 & 34 – alternate numbering.

Part 2 – Graves 2389-3996 – commences at the centre of Rows 33 & 34 and continues to Row 50 – alternate numbering.

Part 3 – Graves 5539-7238 – commences with Row 1 and continues to centre of Rows 24 & 25 – alternate numbering except as indicated below.

Part 4 – Graves 7817-8826 – commences at the centre of Rows 24 & 25 and continues to the end of Row 35 – alternate numbering.

Part 5 – Graves 9811-12066 – commences with Row 36 and continues to Row 63 – alternate numbering except as indicated below.

Parts 3, 4 and 5 are located behind Sections 3C and 5D.

In Part 3, Rows 2 and 3 use alternate numbering, except for Graves 5580-5612.

Graves 13, 15 – not sighted.

Graves 5539-5545 – not sighted – possibly under the drain or roadway.

Graves 5580-5612 – sequential numbering.

Grave 5810 – see end of Row 4.

Grave 6416 – see end of Row 13.

Graves 11254, 11256, 11258 – see Row 50, which starts with sequential numbering.

Graves 11452, 11454, 11456 – see Row 52, which starts with sequential numbering.

Graves 11626, 11628, 11630 – see Row 54, which starts with sequential numbering.

Graves 11776, 11778, 11780 – see Row 56, which starts with sequential numbering.

Graves 11898, 11900, 11902 – see Row 58, which starts with sequential numbering.

Graves 11988, 11990, 11992 – see Row 60, which starts with sequential numbering.

Graves 12046, 12048, 12050 – see Row 62, which starts with sequential numbering.

Section 6E

Grave numbers extend from 177 to 1750.

Section Lawn A (including Wall A)

Grave numbers 1-19 do not exist.

Wall niches have inscriptions engraved on identical bronze plates.

Section Lawn B (including Wall B)

Wall niches have inscriptions engraved on identical bronze plates.

Old Wesleyan

The layout of this area is somewhat confusing, with some sections split into two or more parts – see [plan](#).

Section 1A

Graves 265, 266, 266A – see beginning of Row 2

Section 1B

Graves 4737-4756 and 4761-4797 do not exist.

Section 1C

Graves 31A-51 – see perimeter of Section 1C

Grave 52A – see start of Row 1

Graves 53, 54, 55 – see start of Row 2

Section 1D

Graves 215-223 (sequential) – see Row 9.

Graves 224-252 (alternate) – see end of Row 10

Graves 253-287 (alternate) – see Row 11.

Graves 254-288 (alternate) – see Row 12.

Section 2A

Section 2A forms a circular area with Sections 2B and 2C – see plan. The dividing line between the sections is not evident on the ground, other than by the grave numbers.

Rows 1-8 – alternate numbering

Row 9 – sequential numbering

Rows 10-18 – alternate numbering.

Graves 536, 538, 540, 542, 544 – not sighted.

Rows 19, 20 – no Section 2A graves in these rows.

Section 2B

Section 2B forms a circular area with Sections 2A and 2C – see plan. The dividing line between the sections is not evident on the ground, other than by the grave numbers..

Rows 1-11 – alternate numbering.

Row 12 – alternate numbering to Grave 138, thence sequential.

Rows 13-20 – alternate numbering.

Section 2C

Section 2C is in three parts – one on the perimeter of the Wesleyan area, one triangular and the other forming a circular area with Sections 2A and 2B.

In the latter case, the graves in Section 2C lie between Sections 2A and 2B - see plan. The dividing line between the sections is not evident on the ground, other than by the grave numbers. These run in two intermingled series – 211-250 and 251-386. Graves 256, 297, 298 and 358 were not sighted, while numbers 238 and 240 are duplicated. Graves 251-386 are found in row order but Graves 211-250 are more difficult to find:

Graves 211-214 – see Row 2
Graves 215, 216 – see Row 5
Graves 217, 218 – see Row 6
Graves 219, 220 – see Row 7
Graves 221, 222 – see Row 8
Graves 223, 224 – see Row 9
Graves 225, 226 – see Row 10
Graves 227-229 – see Row 11
Graves 230-232 – see Row 12
Graves 233-235 – see Row 11
Graves 236 – see Row 10
Graves 237, 238 – see Row 9
Graves 238, 240 – see Row 2
Graves 239-241 – see Row 10
Graves 242-244 – see Row 14
Graves 245, 246 – see Row 15
Graves 247, 248 – see Row 16
Grave 249 – see Row 17
Grave 250 – see Row 18

The triangular part of Section 2C is in 14 rows using alternate numbering, but:

Graves 1A, 3B – see Row 1.
Graves C, D, 2A, 2C – see Row 2
Grave 45 – duplicated in Rows 6, 7
Grave 46 – see Row 7

Along the perimeter of the area is another part of Section 2C, using alternate numbering, but in several sequences. They are listed in the order they appear along the perimeter.

Section 2D

This section is in two parts – a triangular section and an area on the adjacent perimeter – see plan. Grave numbers do not always maintain a strict numerical order, but are listed in the same order as they appear within the rows.

Graves 28, 32, 34, 36 – not sighted.
Graves 156-170 – see Row 7.
Graves 171-182 – see Row 6.
Graves 183-190 – see Row 5.
Graves 191-200 – not sighted.

Section 3A

Section 3B adjoins this section – see plan. The dividing line between the sections is not evident on the ground, other than by the grave numbers. The section generally has graves numbered in alternate fashion.

Row 3 – numbering system changes to sequential and back to alternate

Section 3B

This section is in three parts. A crescent-shaped area adjoins much of Section 3A – see plan. The dividing line between Sections 3A and 3B is not evident on the ground, other than by the grave numbers. Section 3B generally uses alternate numbering.

Row 1 is located at the base of the circle (which includes Section 3A), at the point closest to the East Street entrance. All graves have been transcribed in the order they appear within the rows.

Graves 12, 321-324 – not sighted.

Graves 35-39 – not sighted.

Graves 65-77, 248-251 – not sighted.

Graves 273-285 – see southern perimeter.

Graves 286-327 – see central portions of Rows 1-19.

Grave 299 – not sighted.

Graves 301-303 – not sighted.

Graves 312-315 – not sighted.

There is also a separate triangular area to this section, and two areas on the adjacent perimeter – see plan

Section 3D

Rows 1-8 – alternate numbering.

Row 9 – sequential numbering.

Section 4A

Section 4A forms a circular area with Section 4C – see plan. The dividing line between the sections is not evident on the ground, other than by the grave numbers.

Grave numbers in Section 4A do not follow a uniform numbering system. All graves have been transcribed in the order they appear within the rows. Grass plots have been allocated grave numbers to assist those interested in locating grave sites.

Section 4B

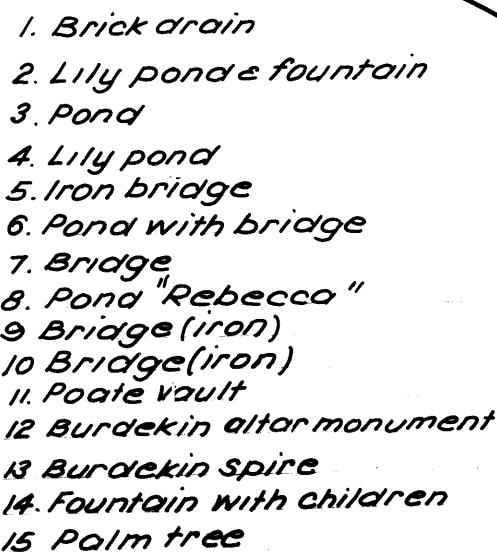
Grave numbers do not follow a uniform numbering system. All graves have been transcribed in the order they appear within the rows. Grass plots have been allocated grave numbers to assist those interested in locating grave sites.

Section 4C

Section 4C is in two parts – one on the perimeter, the other forming a circular area with Section 4A – see plan. The dividing line between Sections 4A and 4C is not evident on the ground, other than by the grave numbers. Graves 1-121 form the perimeter, with remaining graves in rows within the circle. No graves were found in the circle's Rows 1 or 22.

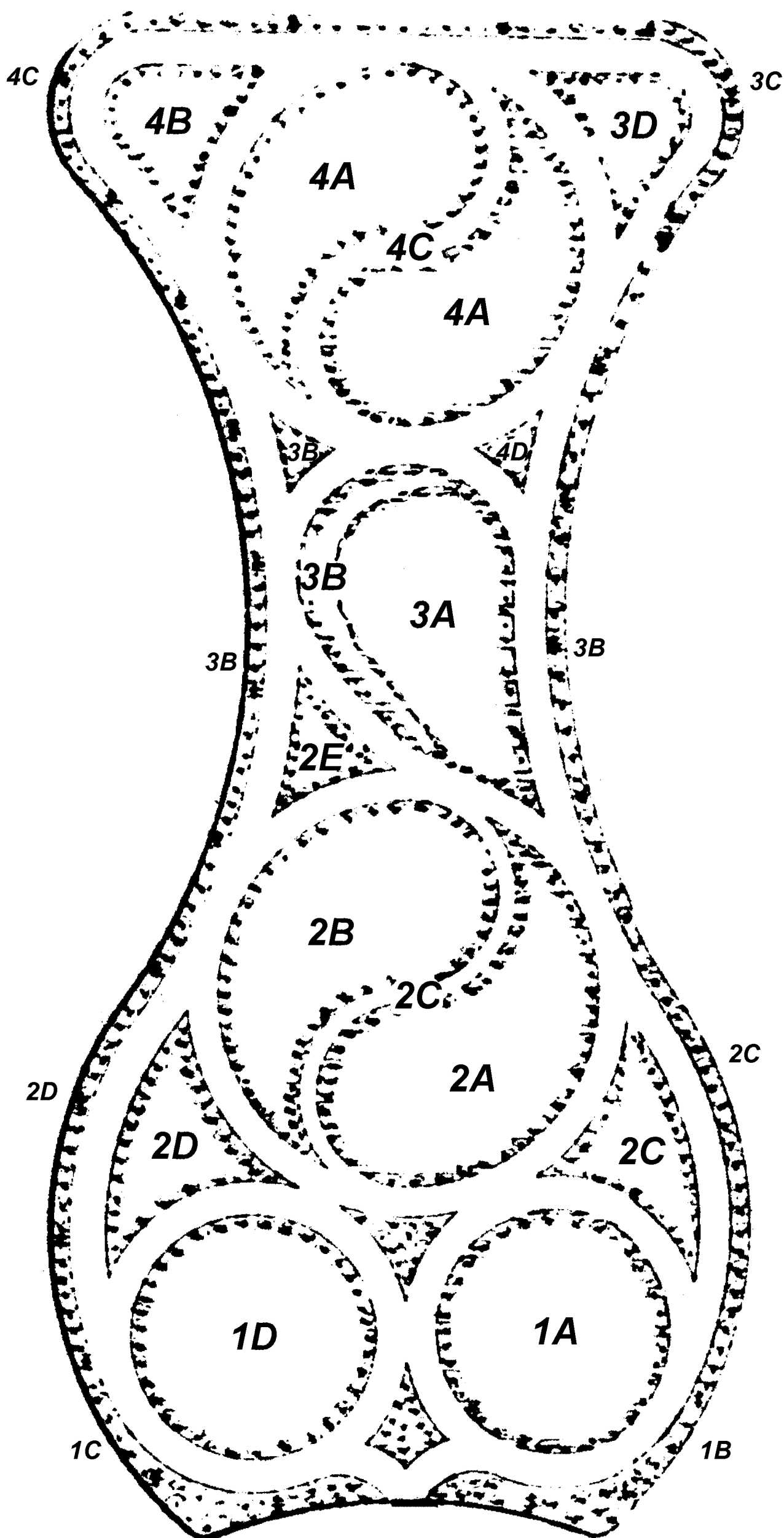
See also [Methodist](#)

section layout, serpentine ponds etc



Rookwood Cemetery Wesleyan Area

*NB: A number of sections are in several parts,
including strips along the perimeter of the area.*



[Other Ethnic](#)

Ethnic (Miscellaneous)

This section is divided into two parts. They are located in the Anglican section of the cemetery. Part 1 lies between the new Jewish Section and Chinese areas. Part 2 is up the side of the hill near the Chinese area. The interments include people born in India, Cyprus, Lebanon, Turkey etc. Less than half the graves are numbered.

See also:

[Assyrian](#)

[Chinese](#)

[Estonian](#)

[Korean](#)

[Latvian](#)

[Old Chinese](#)

[Polish](#)

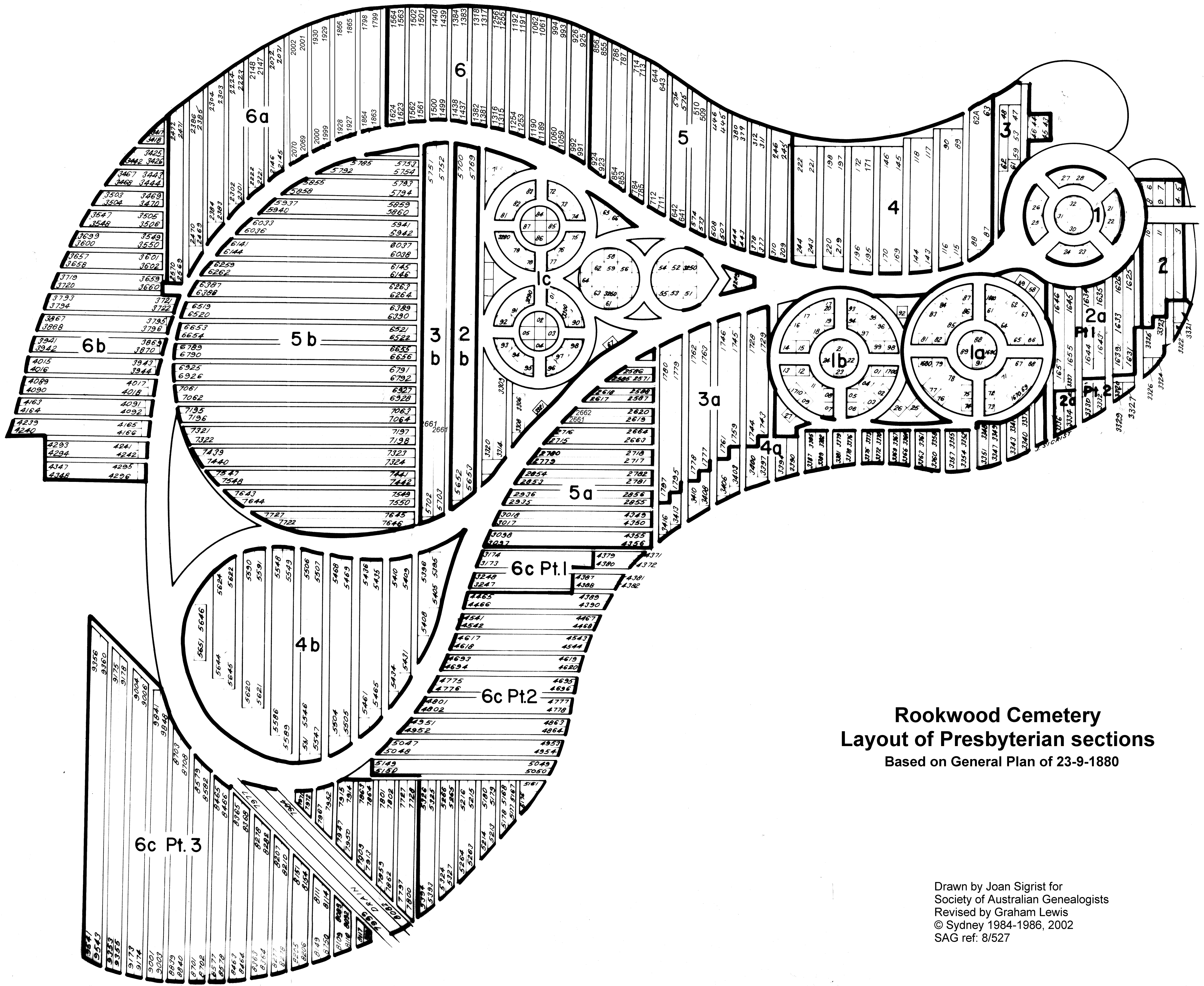
[Russian Orthodox](#)

[Serbian Orthodox](#)

[Ukrainian Orthodox](#)

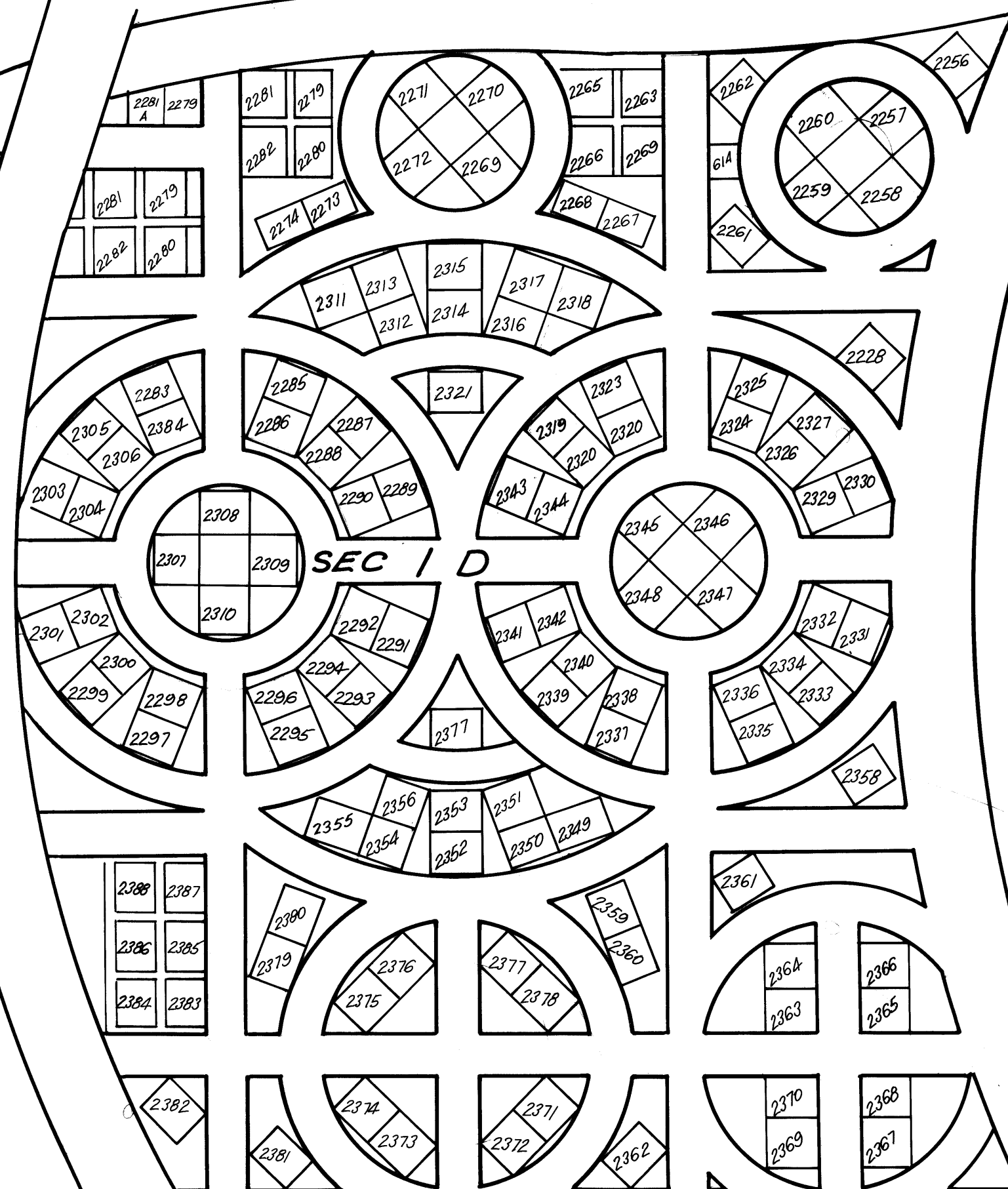
Polish

A section of the [Catholic Mortuaries 2 & 3](#) at Rookwood is identified for the burial of people of Polish ethnic origin.



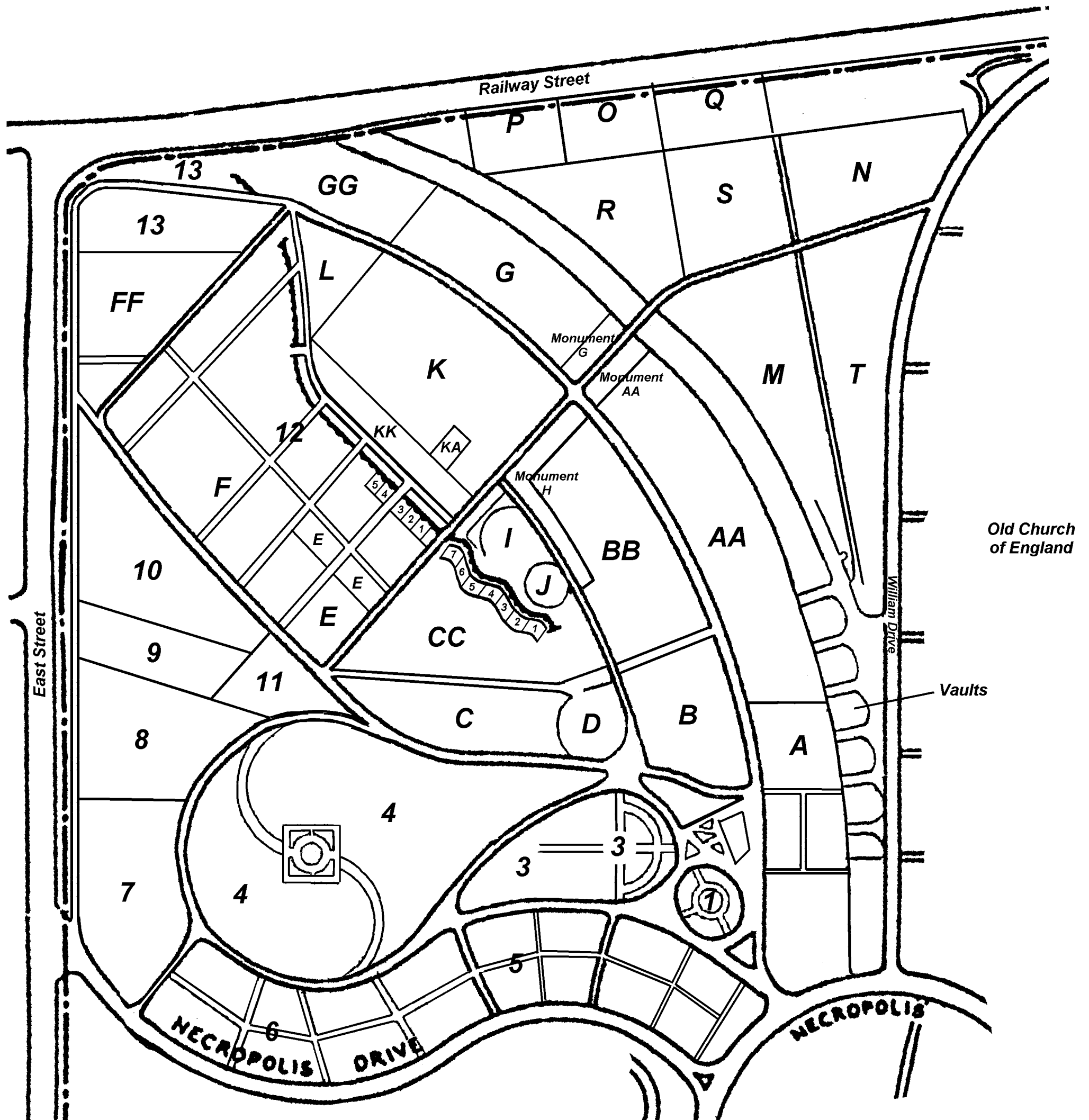
Rookwood Cemetery
Layout of Presbyterian sections
Based on General Plan of 23-9-1880

Drawn by Joan Sigrist for
Society of Australian Genealogists
Revised by Graham Lewis
© Sydney 1984-1986, 2002
SAG ref: 8/527



Rookwood Cemetery

Layout of Catholic Mortuary 1



Old Wesleyan

Russian Orthodox

This area lies within the area administered by the Anglican Office, Rookwood Cemetery.

It was transcribed by SAG – 4063 graves in all – but the great bulk of inscriptions were in Cyrillic characters. The transcription sheets have been retained by SAG in its Primary Records collection at Richmond Villa, 120 Kent Street, Sydney, where they may be consulted. However, the transcriptions were not placed on the fiche edition and have not been placed on this CD.

Salvation Army

Sections B, J and N of the Independent area of Rookwood include parts identified for the burial of Salvation Army members.

Serbian Orthodox

There are three such sections within the area administered by the Anglican Office, Rookwood Cemetery.

It was transcribed by SAG – 871 graves in all – but the great bulk of inscriptions were in Cyrillic characters. The transcription sheets have been retained by SAG in its Primary Records collection at Richmond Villa, 120 Kent Street, Sydney, where they may be consulted. However, the transcriptions were not placed on the fiche edition and have not been placed on this CD.

Society of Friends

Row numbers are not available for this section.

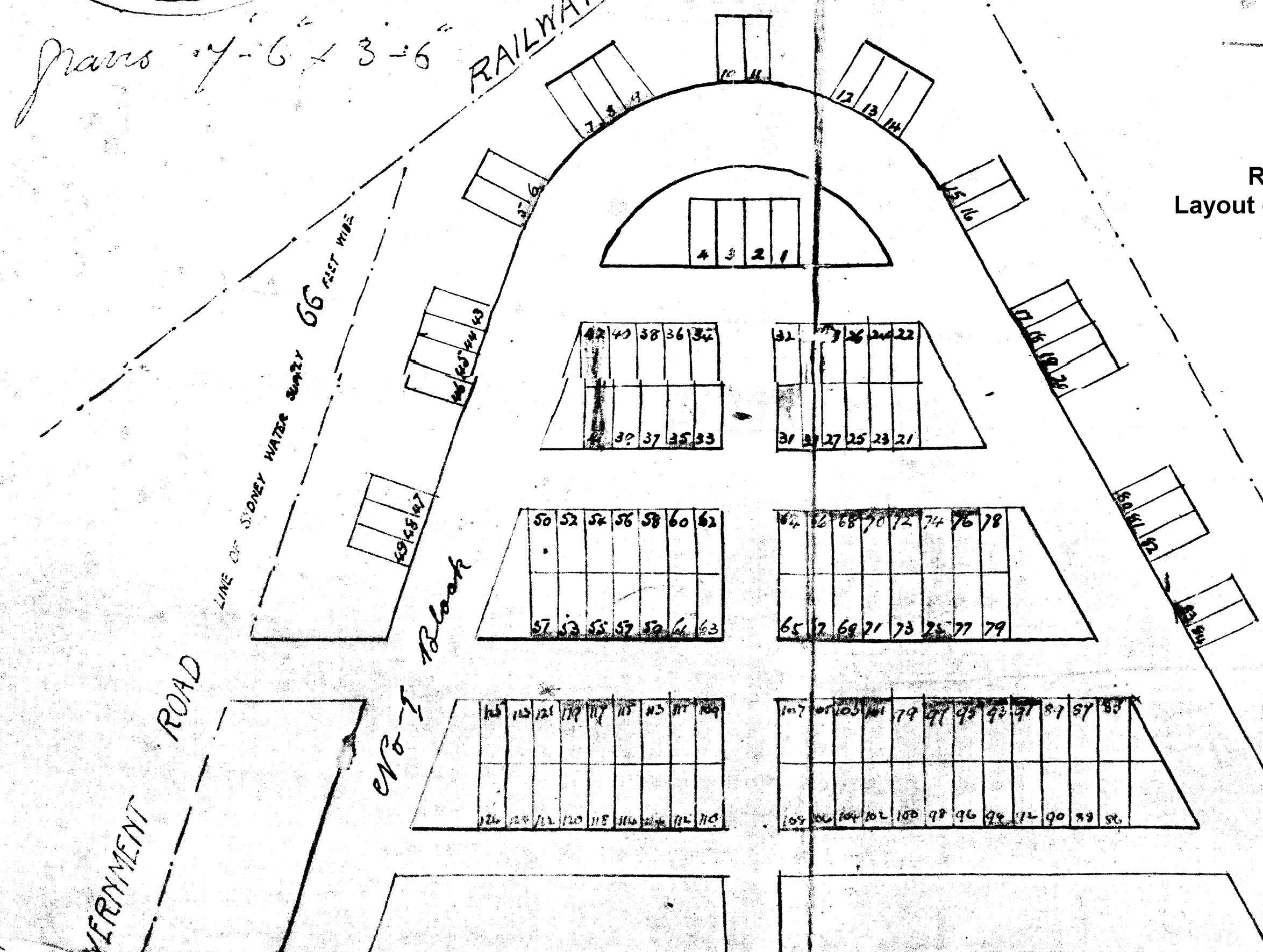
A copy of an old map of this section, detailing the location of each grave and providing name and date of burial for about 55 of them is available by clicking [here](#)

Plan of Part Society of Friends Cemetery at Neoroplis

SOCIETY OF AUSTRALIAN GENEALOGISTS

Rookwood Cemetery Layout of Society of Friends Area

Photocopy of original plan
with entries to 1971(?)
SAG ref: 8/527



No 2
Block

1		22		43		164	William Bonson	Nov 1 st 1927
2		23		44		165	Frederick Charles Newcombe	May 13 th 1924
3		24		45		166	David S. King	March 28 th 1922
4		25		46		167	Harriett Mary Blanford	March 3 rd 1922
5	Lewis May 11/9/25	26		47		168	Elizabeth Walton	July 13 th 1920
6	Elizabeth Naimby	27		48		169	Samuel Temple 7 th Nov 1911	
7	Margaret Senior	28		49		170	William Alfred Meyer	31 Oct 1919
8	Caroline Schifala	29		50		171	Elizabeth Duld	10 March 1932
9	Caroline Sheffield	30		51	Isabella Barron	172	Charles Horrie (owner)	
10		31		52	Isabella Barron	173		
11	Alfred Allen	32		53	Isabella Barron	174		
12		33		54	Isabella Barron	175	James Wilfred Horrie	Oct 1 st 1923
13		34	Isabella Barron	55	Isabella Barron	176	Robert Handley	10 th Sept 1933
14		35	William Cotnam	56	Isabella Barron	177		
15	Ruth Barker	36		57	Isabella Barron	178		
16		37		58	Isabella Barron	179		
17	Jane Dwyer	38		59	Isabella Barron	180	Isabella Barron	
18	Arthur & Dwyer	39		60	Isabella Barron	181	Isabella Barron	
19	Isabella Barron	40		61	Isabella Barron	182	Isabella Barron	
20	Isabella Barron	41	Isabella Barron	62	Isabella Barron	183	Isabella Barron	
21	Isabella Barron	42		63	Isabella Barron	184	Isabella Barron	
22		104		123				
23		105	Donald Woodell	124				
24		106		125				
25		107		126				
26		108		127				
27		109	Thomas Wells	128				
28		110		129				
29		111	Isabella Barron	130				
30		112	Isabella Barron					
31		113	Isabella Barron					
32		114	Isabella Barron					
33		115	Isabella Barron					
34		116	Isabella Barron					
35		117	Isabella Barron					
36		118	Isabella Barron					
37		119	Isabella Barron					
38		120	Isabella Barron					
39		121	Isabella Barron					
40		122	Isabella Barron					



an outstanding place of cultural and environmental heritage

Historical Tours



Walking-tours, each with varying themes start at 10am and 1.30pm from the northern side of Necropolis Circuit on the first Sunday of the month by Friends of Rookwood Inc. Car tours can be arranged by telephoning 94499 2415.

Guides are volunteers and money raised is used for restoration projects. You can join the Friends of Rookwood and enjoy the historical, cultural and social activities while making a contribution to on-going necropolis restoration projects.

Helping Hands

This is another volunteer group who assist with archeological investigation, landscape maintenance, and other supervised activities aimed at restoring the historic fabric of Rookwood Necropolis. Contact Helping Hands on 9746 8433.

How to find a Grave

There are over 600,000 burials and 200,000 cremations recorded at Rookwood. The first burials took place in 1867. Older monuments have since been moved to Rookwood from earlier burial grounds resumed elsewhere in Sydney. Cremations date from 1925 but did not become a significant proportion of the services held at Rookwood until around 1945.

If you are looking for a memorial and you don't know where to start, here are some helpful steps to take:

It is useful if you know year of death, whether the deceased was cremated or buried and if buried, what denominational cemetery the deceased was most likely to have been interred.

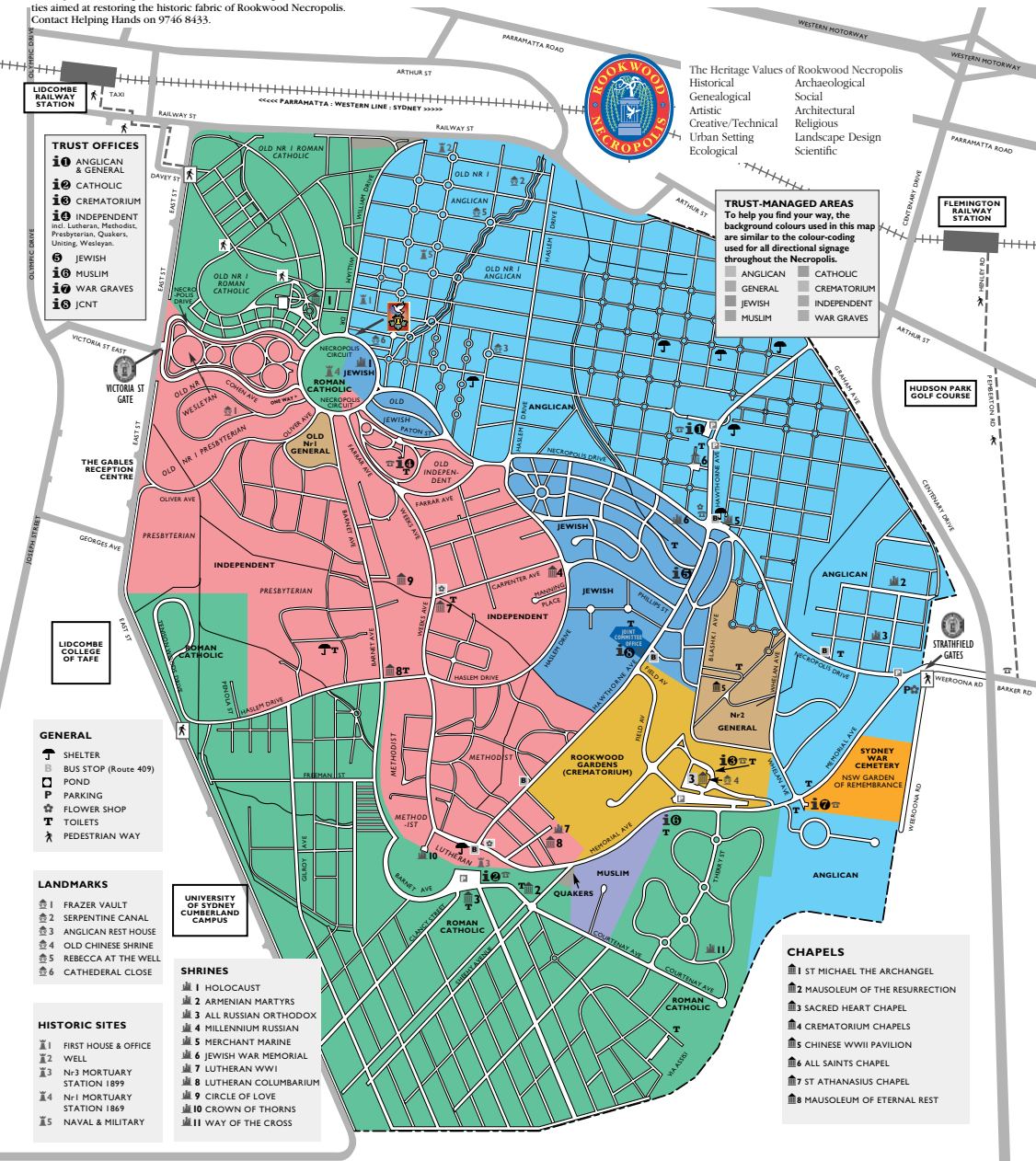
Records of all burials and cremations are held in the respective offices. The offices located at Rookwood are:

• Anglican & General • Roman Catholic • Independent (Uniting, Lutheran, Presbyterian, Methodist, Wesleyan, Religious Society of Friends/Quakers)
• Rookwood Memorial Gardens.

*** Muslim and Jewish cemetery records are held off-site.

If you think the deceased may have been cremated, start enquiries at the Rookwood Memorial Gardens if the death occurred after 1925, otherwise start your enquiry in the most likely denominational office.

Once you have found the correct office, the staff will be able to help you find the grave in the cemetery.



Ukrainian Orthodox

Section P of the area of Rookwood administered by the Anglican Trust is identified for the burial of people of Ukrainian ethnic origin. The great bulk of inscriptions were in Cyrillic characters.

The (non-Cyrillic part of the) transcriptions for Row 1 and 7 were placed on the fiche edition and on this CD. The remaining rows (2 to 6 – Graves 41-240) were omitted.

The transcription sheets have been retained by SAG in its Primary Records collection at Richmond Villa, 120 Kent Street, Sydney, where they may be consulted.

[Uniting Church](#)

See [Methodist](#).

War Memorial Cemetery

The War Cemetery is arranged in blocks. The fiche version showed the block number only at the start of each block, and therefore not on every fiche. Nearby grave reports will therefore often not show the block number, which should be noted when viewing the CD search results.

Block 1: Rows 2WA, 2WB, 2WC, 2WD

Block 2: Rows AA, AB, AC1, AD1

Block 3: Rows GA, GB, GC

Block 4: Rows HA, HB, HC

Block 5: Rows 2ZA, 2ZB, 2ZC, 2ZD

Block 6: Rows 3AA, 3AB

Block 7: Rows DA1, DC, DD

Block 8: Rows EA1, EB, EC, ED

Block 9: Rows FA, FB

Block 10: Rows MA, MB, MC, MD

Block 11: Not transcribed.

Block 12: Rows PA, PB, PC

Block 13: Rows TA, TB, TC, TD

Block 14: Rows UA, UB, UC, UD

Block 15: Rows VA, VB, VC, VD

Commemorative Walls

Inscribed around the top of the commemorative wall are the following words: "1939. Here are recorded the names of the men & women who died in the eastern & southern regions of Australia, on land, at sea, and in the air, but to whom the fortune of war denied the known and honoured burial given to their comrades in death. 1945"

The wall is arranged in panels:

AIF – Panels 1-4

Australian Commonwealth Military Forces – Panel 4

Australian Army Service Corps – Panel 4

Royal Australian Air Force – Panels 5-7

Merchant Navy – Panels 8-10

Addendum – Panel 10

In the memorial garden is another wall, inscribed with the following words: "1939-1945. The servicemen who are honoured here died in New South Wales. Their remains were cremated and the ashes scattered or rest in places where full commemoration could not be given."

This wall has the following panels:

Royal Australian Navy – Panel 1

Naval Dockyard Police – Panel 1

Merchant Navy United Kingdom – Panel 1

Australian Imperial Force – Panels 2, 3

Australian Commonwealth Military Forces – Panels 3, 4